

## The Indian Ocean yellowfin stock and fisheries in 2003: overview and discussion of the present situation

By Alain Fonteneau<sup>1</sup>, Javier Ariz<sup>2</sup>, Jean Pierre Hallier<sup>3</sup>, Vincent Lucas<sup>4</sup>, Pilar Pallares<sup>5</sup> and Michel Potier<sup>6</sup>

### 1- Introduction:

It has been noticed that yellowfin catches taken by purse seiners in the Indian Ocean during 2003 were extremely high. After several years of slowly increasing catches, there was in 2003 a sudden jump in the yellowfin catches (taken at large sizes), at levels over 200000 tons (figure 1 and 2). On the opposite, catches of the other target species, such as skipjack and bigeye, were maintained during 2003 at their average levels. Now the pending scientific questions are:

(1) to identify the reasons explaining this record 2003 high catches (basically, are they due to a high biomass or to a high catchability of an “average” stock?),

(2) to examine if this trend of high catches was also observed (or not) for other fisheries (longliners and artisanal ones) during 2003, and if these high catches were also observed during the beginning of 2004 as these high catches could worsen the stock status of yellowfin.

(3) to evaluate through a preliminary stock assessment analysis the consequences of these high catches on the stock status of yellowfin (the final real scale stock assessment being done only when most fishery data will be available, e.g. at the earliest date in 2005). This revised stock assessment incorporating the 2003 data is very important, because the 2003 yellowfin catches will probably be well above any of the MSY presently estimated by scientists.

This paper will attempt to examine and discuss these various points.

### 2- The yellowfin fisheries in 2003

#### 2-1- Facts on the 2003 EU purse seine fishery

##### 2-1-1- Introduction:

The 2003 purse seine fishery has been analysed in details, comparing the 2003 data to data from the same fishery during recent years. This comparison has been conducted independently of the flags, on the EU owned fleet of purse seiners (carrying flags of Spain, France and other countries). The data concerning the Japanese, Ex-Russian and Iranian purse seiners were not available and not used in this study, although these fleets have also been active in the 2003 yellowfin fishery.

---

<sup>1</sup> Alain Fonteneau, IRD scientist, IRD, Sète, France

<sup>2</sup> Javier Ariz, IEO scientist, Canary Islands, Spain

<sup>3</sup> Jean Pierre Hallier, IRD scientist, Seychelles

<sup>4</sup> Vincent Lucas, SFA scientist, Seychelles

<sup>5</sup> Pilar Pallares, IEO scientist, Madrid, Spain

<sup>6</sup> Michel Potier, IRD scientist, La Réunion, France

## **2-1-2- Catches by purse seiners**

Levels of total catches taken by species (figure 1) show that skipjack and bigeye catches were at levels similar to the levels observed during previous years, when the 2003 yellowfin catches were at their highest level ever observed in the purse seine fishery, 55% in excess of the previous higher catch observed in 2002. The levels of yearly yellowfin catches by fishing mode (on FADs and on free schools) taken by the sampled fleet of purse seiners are shown on figure 2. This figure shows that the extra catches of yellowfin taken during 2003 were caught predominantly on free schools.

## **2-1-3- Fishing effort and CPUE by purse seiners**

Nominal fishing efforts exerted by the sampled purse seine fleet, expressed in terms of its numbers of sets (on FADs and on free schools) and of its yearly fishing days and total carrying capacity are shown figure 3 and 4. These figures indicate that all these indices of nominal fishing effort exerted by the fleet were quite stable in 2003, and very similar to the levels exerted during recent years. This point is also well shown by the relationship between yearly yellowfin catches by the sampled fleet and its fishing effort (figure 30); the peculiar position of 2003 clearly appears in this figure with a very high yellowfin catch taken by a moderate effort. This 2003 year is clearly outside the catch & effort relationship previously observed for this fishery.

The corresponding CPUEs, in terms of average catch per fishing day, are shown (on FAD and on free schools) on figure 5. This figure shows that the CPUE on FADs was stable in 2003, when the CPUE on free schools has reached in 2003 its record level in the 1982-2003 statistical series. The average catch per set (figure 6) shows that the high CPUE observed in 2003 were primarily due to the high frequency of very large sets (figure 7). It can be noticed that this trend was already visible to a less degree in 2002.

## **2-1-4- Fishing zones in 2003 and in previous years**

The overall fishing zones exploited by the sampled purse seine fishery in 2003 and during previous years (average 1995-2001) are shown on figure 8 and 9, when the yellowfin fishing zones during the same periods and in 2002 are shown on figure 10. The fishing zones during 2003 appears to be non typical, (1) with a lack of any significant fishing activity in the Mozambique Channel during the 2<sup>nd</sup> quarter (2003 was the first year in the 1983-2003 series during which this lack of fishing in the Mozambique Channel has been observed) and (2) with large catches of yellowfin taken on free schools in the area between 5° to 10°S, west of 65°East. Figure 11 shows that this fishing zone (shown by figure 12) was already exploited during previous years, but it also shows that in 2003 the yellowfin catches taken in this area were much higher and being taken all year round (when this area was fished seasonally during previous years). It should also be noticed that large fractions of these 2003 yellowfin catches have been taken close to the African continental shelf. On the other side, it could also be noted that the total size of the area fished by the purse seine fisheries measured in term of numbers of 1° squares fished (figure 13), was stable and very similar to the sizes of the areas fished during recent years.

## **2-1-5- Sizes of yellowfin taken in 2003 and in previous years**

The sizes of yellowfin taken in 2003 are shown on figure 14 (free schools) and figure 15 (FAD), and compared to the sizes taken by the same fishery during the previous year (figure 16). The average size of yellowfin taken on free schools was typically high at an average of 35 kg, one of the largest average weights observed in the fishery (figure 17) but similar to the average of the 1982-1983 and 1991\_1994 periods. The shape of the 2003 size

histogram on free schools (figure 14) appears to be typical of the yellowfin sizes taken by purse seiners in the area, e.g. a typical dominance of large fishes over 80 cm of fork length. It can also be noted that the excess of catches was observed at all large sizes, and not in a peculiar range of sizes or ages. On the contrary, yellowfin sizes taken on FADs are very similar to previous years in term of size distribution (Figures 15 & 16) and average size (Figure 17).

## **2-1-6- Conclusion on the 2003 yellowfin purse seine fishery**

After at least 12 years of stability in the Indian Ocean purse seine yellowfin fishery (with the exception of the 1998 El Niño anomaly and its effects on the purse seine fishery), 2003 appears to be a year of marked anomaly in term of its large quantities of large yellowfin taken and because of its peculiar fishing zones (although these fishing zones were located within previously exploited areas). As the purse seine fisheries are a major component of the Indian Ocean yellowfin fisheries (catching an average 38.5% of yellowfin catches during recent years 1998-2002), this event will necessarily play a significant role in the dynamics of the stock exploitation and status.

## **2-2- Yellowfin fisheries by longliners**

### **2-2-1- Overall**

Purse seiners and longliners are exploiting the same yellowfin stock, at least this is the present IOTC hypothesis. However, the year to year changes of stock catchability (for instance due to environmental anomalies) and to changes of fleet efficiency (for instance the effects of new sonar in the purse seine fishery) are often quite independent for these two fleets. Then the comparison of CPUE obtained during 2003 by these two gears will be of immediate interest in order to check if they show the same or opposite trends in the Western Indian Ocean fished area.

Good examples of such positive comparisons were shown by the effects of the *El Niño* anomalies on purse seine and longliners CPUE: this comparison shows (figure 28) that the yellowfin longliners CPUE was quite insensitive to the most active El Niños observed in the Atlantic (1984) and Indian (1998) oceans. On the opposite, the purse seine yellowfin CPUE were seasonally very low in these two oceans during these major El Niño events: such stability of the longliners yellowfin CPUE were in fact better representing the real adult biomass trends, when the purse seine CPUEs were providing a too much pessimistic view of the stock status (because of a temporarily low catchability of the adult stock due to these El Niño events).

The opposite cases of a purse seine anomaly of a “too high” purse seine CPUE, due to a high catchability of the stock, could also be envisaged and the comparison of purse seine and longliners 2003 yellowfin CPUE should be done to make this comparison.

### **2-2-2 Yellowfin Longline fisheries in 2003**

Catch and effort data collected on the longline fisheries are available with about 1 year of delay (as large scale longliners tend to remain at sea for long durations). However, a subset of the logbooks was obtained by the SFA on several Japanese longliners that have been active in and around the Seychelles EEZ during 2003. This preliminary data set shows that a high CPUE has also been observed for yellowfin taken by Japanese longliners in the fishing zone within and around the Seychelles EEZ (Figure 31). There is no doubt that yellowfin has been

the target species in this strata as this species was widely dominant in the local catches by longliners. These statistical information obtained by the SFA is also widely confirmed by the report by Nishida and Shiba (this meeting), as this document shows a highly positive catch and CPUE positive anomaly of yellowfin catches and CPUE in the Western IO, especially in the area South and S-W of Seychelles. This “anomalous” area is more or less the area where the purse seine anomaly of catches has been observed during 2003 for purse seiners.

Then, the conclusion is that it seems that the longliners yellowfin fishery has found and heavily exploited in the Western Indian Ocean large biomass of yellowfin (or a “normal” biomass of yellowfin, but heavily available to longliners). This high availability of yellowfin will probably produce a record high 2003 yellowfin catches for the Japanese longliners. These high catches will probably also be observed for other longline fleets such as the Taiwanese fleet, as these longliners have a long history in the exploitation of this fishing zone..

### 2-3- Yellowfin and artisanal fisheries

It should also be necessary to analyse the CPUEs and catches of large yellowfin taken by the various artisanal fisheries that are targeting this group, for instance in the Maldives, in Yemen, Sri Lanka and Oman hand line fisheries, or the performances of the various coastal drift net fisheries catching yellowfin.

Unfortunately it was not possible to obtain any quantitative or qualitative information on the catch trends of yellowfin of any of these fisheries when this paper has been finalized (early July 2004).

- If the average catches and CPUE of these artisanal coastal fisheries scattered in the Indian Ocean have been “average”, it would indicate that the high catches by purse seine were due to an increased catchability of the stock to the purse seine and longline fleets.
- On the opposite, if catches/CPUE of these artisanal fisheries are also larger than previously, it would tend to confirm a positive trend in the biomass of the adult stock size, or that the anomalies producing high CPUE in the purse seine fishery have also produced high CPUE in these coastal fisheries.

### 2-4- Prognosis upon total yellowfin catches in 2003?

In the Indian Ocean tuna fisheries, it is unfortunately impossible, at the date of the IOTC stock assessment meetings (held in July), to obtain any realistic catch statistics for all major fleets; most data are still missing for a majority of artisanal fisheries and for most or all oceanic longliners. On the other side, as the purse seine fisheries are a major component of the yellowfin fisheries in the Indian Ocean (producing an average 38.5% of total yellowfin catches during the last 5 years), it is possible to estimate the potential trend of total catches based on the purse seiners catches. A tentative estimate of this total catch has been made based on the following rules:

(1) a **low estimate** of this 2003 catch can be obtained, assuming that all the fisheries that are not covered by this analysis have kept a constant catch of yellowfin in 2003. Such low estimates of the 2003 catch would be of **400.000 tons**

(2) a **high estimate** of the 2003 catch can be obtained assuming that all the fisheries that are not covered by this analysis have been increasing their yellowfin 2003 catches in the same proportion as the EU purse seiners (e.g. an increase of 55 %). This estimates would correspond to a 2003 catch of **500.000 tons**.

Total catches of yellowfin taken in the Indian Ocean since 1950 and this potential range of total catches between 400.000 and 500.000 tons could be kept as a temporarily working hypothesis, and they are shown on figure 18. The corresponding Grainger and Garcia indices (rates of increase of catches calculated during the 20 last years in reference with catches taken during the 6 previous years) are shown figure 19. This figure shows that the 2

values estimated as being a potential minimum and maximum rates of increase of the 2003 catches are both at the highest levels observed during the last 10 years, as all these recent rates of increase were either close to zero or negative (this negative rate being a strong indication that the stock was fully exploited and probably overfished during the period, as the effective efforts of most fleets were probably increasing during the same period).

### **3- Potential explanations for the 2003 high catches of yellowfin**

#### **3-1- An increased biomass of large yellowfin during 2003?**

##### **3-1-1-The question:**

Any increased CPUE such as the one observed in yellowfin during 2003, can be explained, among other hypothesis, by a corresponding increase of stock biomass. This conclusion may be a valid one at constant effective effort when it can be assumed that the catchability factors of the fleet were not increased during the considered year. In the case of the 2003 high catches, as all the “excess” catches were observed at medium and large sizes, the immediate hypothesis would be that there was in the 2003 yellowfin population one or several large cohorts that have been recruited during the 2000-2002 period, and made available to the adult stock (for the first time) during the year 2003. Upon this point, it should be kept in mind that the adult stock of yellowfin is “constituted” by several cohorts, probably at least 5 cohorts in the range of sizes between 80 and 150 cm (the range of sizes caught in excess during 2003). It should also be kept in mind concerning this point that the adult biomass of such stock cannot be widely increased within a very short period of time, unless through the introduction of major year class (there is a basic inertia of such adult stock, at least for its potential increases). The potential validity of such hypothesis could be tentatively validated through two simultaneous approaches:

(1) An analysis of juvenile yellowfin CPUE during recent years, for instance since 1999, when these fishes were recruited in the same purse seine fishery. The presence of one or several large cohorts should have produced an increase of the purse seine CPUEs of juvenile yellowfin during this recent period. An index of CPUE of juvenile yellowfin (e.g. fishes less than 5 kg) in the purse seine fishery has been calculated.

(2) An analysis of the longline yellowfin CPUEs in 2003: if there was a real positive anomaly in the abundance of large yellowfin in 2003, such anomaly should have also produced a positive anomaly of their yellowfin CPUEs, at least in the Western Indian Ocean. It is too early to answer this question, but the sample of longliners data analysed by the SFA is interesting and has shown that large CPUE and catches of yellowfin have been observed in the fishery close to the purse seine fishing areas (paragraph 2.2.2). This point has been well confirmed by Nishida and Shiba, this meeting.

##### **3-1-2- Purse seine CPUE of juvenile yellowfin**

The input data of the GLM CPUE indices was the nominal CPUE (figure 27a) of small yellowfin (<65cm) by quarter and areas shown figure 12). The 4 “traditional” fishing zones used in most analysis of the purse seine fishery (figure 12: Somalia, West Seychelles, East Seychelles and Mozambique Channel) have been used to do this calculation.

Standardized catch rates of small yellowfin taken by purse seiners were considered as being recruitment indices

These standardized cpue were obtained by general linear models (GLM) using the Delta-Lognormal method. In this method two components are considered: the probability that cpue

was bigger than zero,  $P\{cpue>0\}$ , and the distribution of the positive values of cpue. Both could be modelled independently to obtain, on one side, an adjustment of the positive cpue probability, and on the other hand, the expected cpue conditioned to obtain a cpue value bigger than zero. Then the Delta-Lognormal model proposed, comprises two lineal generalized using the Bernoulli and Lognormal distributions respectively.

The relative cpue for every year is:

$$CPUE_i = \mathbf{m}p_i, i = 1,2,3.$$

where  $\mathbf{m}$  is a unit of standardized cpue for the positive catches in every zone, and  $p$  is a unit for the standardized proportion of positives.

The model to adjust cpue for positives is:

$$\ln(CPUE) = X\mathbf{a} + Z\mathbf{b} + \mathbf{e}$$

where cpue is the observations vector,  $X$  is the main factors matrix,  $\mathbf{a}$  main factors parameter vector,  $Z$  is the interactions matrix,  $\mathbf{b}$  is the interactions parameter vector and  $\mathbf{e}$  is the independent error vector identically distributed that follow a  $N(0, \mathbf{s}^2)$ .

On the other side, to estimate the proportion of positives, all the data set was used. A random variable Bernoulli type was created with value 0 or 1, depending if the cpue was nil or positive respectively. Then the average of this variable is calculated in every defined strata for every year, area and quarter and the number of observations existing in every one is calculated.

The probability that the cpue could be positive, could be modeled through a binomial GLM with the logit function as a connection between the explicative variables and the response variable, i.e., the appearance of positive cpue is a Bernoulli random variable with a probability  $p$  given by:

$$\text{Log}(p/(1-p)) = Z\mathbf{a} + Z\mathbf{b} \text{ o bien,}$$

$$p = 1 / ( 1 + \exp\{ X\mathbf{a} + Z\mathbf{b} \} ),$$

where  $X$  is the main factors matrix,  $\mathbf{a}$  is the main factors parameters vector,  $Z$  is the interaction matrix, and  $\mathbf{b}$  is the interactions parameters vector.

In our analysis we considered four areas: Somalia, Western Seychelles, Eastern Seychelles and Mozambique Channel. Data used correspond to the period 1991-2003. (data from the period 1984-1990 should also be used in the analysis, but unfortunately this file of the early fishery has not yet been fully standardized<sup>7</sup> in a similar way as the 1991-2003 series, and then it remains difficult to use in the same GLM model)

---

<sup>7</sup> These sizes were processed by 1° and month strata with small size samples and multiple strata substitutions, when the recent series have been processed by large ET areas and quarters, using large samples and few substitutions)

For the cpue>0 we considered the purse seine catch of fish less than 65 cm divided by the total effort as response variable. As explanatory variables we included year, area and quarter all considered as factors. The final model was:

$$\log(\text{cpuep}) \sim \text{year} + \text{area} + \text{quarter}$$

The model for the proportion of positives was a binomial GLM with the logit function as link,

$$\text{propor} \sim \text{year} + \text{area} + \text{quarter} + \text{area:quarter}$$

Variances explained by both models were 46% and 74% respectively.

The following table shows the ANOVA results.

<b>ANOVA TYPE III SUM OF SQUARES</b>					
<b>Positive CPUE</b>					
	<b>Df</b>	<b>Sum of Sq</b>	<b>Mean Sq</b>	<b>F Value</b>	<b>Pr(F)</b>
<b>Year</b>	12	157.9636	13.16363	17.9231	0.0000000
<b>Area</b>	3	115.5485	38.51617	52.44215	0.0000000
<b>quarter</b>	3	20.5911	6.8637	9.34535	0.0000052
<b>Residuals</b>	471	345.9263	0.73445		
<b>Proportion of positive CPUE</b>					
	<b>Df</b>	<b>Sum of Sq</b>	<b>Mean Sq</b>	<b>F Value</b>	<b>Pr(F)</b>
<b>Year</b>	12	1.06298	0.088582	2.7147	0.0021521
<b>Area</b>	3	10.23911	3.413035	104.5964	0.0000000
<b>quarter</b>	3	1.71884	0.572947	17.5586	0.0000000
<b>area:quarter</b>	9	5.93904	0.659894	20.2232	0.0000000
<b>Residuals</b>	179	5.84086	0.032631		

Table 1: . ANOVA type III results from the lognormal model of positive cpue and binomial model of the proportion of positive cpue.

The yearly GLM CPUE indices obtained by this model are shown figure 27b.

As a conclusion, this CPUE index do not show any very large year class recruited in the purse seine fishery during recent years (figure 27 a & b). It would then be surprising that one or several large year classes of yellowfin would have been recruited in the adult stock, but without noticing large corresponding CPUE of small yellowfin in the purse seine fishery.

On the other side, it has been noticed that the purse seine fishery has widely increased its catches of small yellowfin since the mid nineties (Shanghai WG report), although its nominal effort was kept stable or decreasing. It was then concluded that these increased catches of juvenile yellowfin were due to the increased use of FADs (as all these small yellowfin were taken under FADs), and not to increased recruitments.

This trend to increase catches of juvenile yellowfin is easily visible on the nominal CPUE of juvenile yellowfin (figure 27a), but not on the GLM **(this is quite surprising... why?)**.

If these high catches of juvenile yellowfin after 1995 were due to high recruitment (and not to increased catchabilities), it is clear that these fishes should have produced a

progressive significant increase of the adult stock during the late nineties, but this increase was not visible in the adult CPUE of purse seine or longline fisheries. The conclusion obtained by the Shanghai WG in 2002 that these higher catches of juvenile yellowfin were due to an increased catchability due to an increased use of FADs, remains the best hypothesis.

### **3-1-3- Why such large biomass of yellowfin tuna could have been observed in 2003?**

Although the hypothesis of a sudden “real” increase of the adult biomass in 2003 appears to be quite unrealistic, such increase of biomass could be in relation with three potential factors:

(a) **improved stock productivity:** a wide scale environmental change in the Indian Ocean environment that would be producing an increase of the yellowfin biological productivity (improved biological condition and lower natural mortality): this change could for instance be in relation with the large quantities of a new food available to yellowfin, the *Natosquilla* crustacean. This type of biological natural variability has been often demonstrated for temperate tunas such as bluefin (Ravier et Fromentin 2004) and albacore (observed in both Atlantic and Pacific oceans), but can also be envisaged for tropical tunas. In this case, the large biomass of *Natosquilla* available to juvenile and to the adult could have increase the growth rates and decrease natural mortality, especially of juvenile (less predation by their parents, better food easily available).

(b) **Great concentration of the yellowfin biomass in a small area**, where these tunas have been heavily vulnerable to both purse seine and longline fisheries (and to some artisanal fisheries). This peculiar concentration of yellowfin tuna should have been due to an environmental anomaly, but the environmental causes of this anomaly remains unknown (outside the massive presence of *Natosquilla*).

(c) **A stock productivity previously underestimated by scientists:** the diagnosis previously done by the IOTC scientists was that the yellowfin stock was fully exploited since the late nineties, with an MSY estimated at about 300.000t. This result has been obtained by various assessment methods. However, there is still the possibility that this estimated MSY was underestimating the real biological productivity of the yellowfin stock. Such bias underestimating the real MSY of a yellowfin stock has in fact been observed for many stock assessment works conducted on yellowfin during the last 40 years in the Pacific, the Atlantic and the Indian Ocean. These underestimated MSY were most of the time easily explained by scientists, at least *a posteriori*, being due to an area effect (increased of zoned fished, and viscosity of the stock) or/and a gear effect (longliners being *de facto* very inefficient to catch the MSY of any yellowfin stock).

## **3-2- Increased catchability of large yellowfin in 2003**

### **3-2-1- Introduction**

This question can easily be stratified into various “explanatory sub-hypothesis” such as the following:

(1) an **environmental anomaly** developed during 2003, for instance a shallow thermocline, that could have temporarily increased the catchability of large yellowfin to the purse seine fleet in given areas, or an environmental anomaly leading to **large concentration of the Indian Ocean yellowfin biomass in the south-western Indian Ocean.**



(2) an **increased catchability** of large yellowfin due to an anomaly in their **behaviour** (this point being potentially linked with the previous one), and/or

(3) the effect of **new technological factors** introduced during 2003 by the purse seine fleets, such changes **increasing their fishing efficiency** on free schools of large yellowfin.

It should be kept in mind that the high frequency of very large sets observed during 2003 could be linked to each of these three sub-hypothesis, as these large sets could be due either to an environmental anomaly, a change in tuna behaviour and/or to a technological improvement in the purse seine fishery.

### 3-2-2- New fishing zones in 2003?

It is well known that any significant increase in the size of the exploited fishing zones tend to produce sustainable increases of catches and of stock MSY (Die and al. 1990, Laloe 1989). This is due to the fact that despite of their migratory behaviour, all tuna stocks tend to be “viscous”, e.g. they are often showing limited movements instead of the large scale migrations that could be “expected” for such highly migratory species (Fonteneau and al. 1996). As the movement patterns of most tuna stocks are often quite limited in their geographical scale, when a fishery discovers a new fishing zone, the exploitation of such new zone often tend to produce a sustained increase of catches on the stock (when before these remote & isolated fractions of stocks were *de facto* still cryptic and unproductive). Such potential sustained increase of catch is of course dependent of the stock viscosity and also of the distance between the traditional and new fishing zone.

The analysis of the exploited zone is showing (figure 13) that the size of the area fished by purse seiners has been showing a slow and moderate decline during the last 6 years, the area fished in 2003 being at the lowest level observed during the last 8 years.

However, the map of the yellowfin fishing zones in 2003 compared to the fishing zones exploited during previous years (figure 10), do show that the areas successfully fished for yellowfin during 2003 were **highly non-typical**: large catches of free school of yellowfin have been taken during the entire 2003 year in an area south of Seychelles, between the African coast and west of 65°E, when in the past the yellowfin CPUE and catches were low in this area (Figure 10). It can also be noticed in this map that large quantities of yellowfin have been taken very close to the African coast and close to the African continental shelf. Figure 21 shows the total yearly catches of the sampled purse seiners in this area 5°-10°S, west of 65°E, and this figure shows well the spectacular jump observed about the 2003 yellowfin catches in the area: more than 100.000 t being taken in an area where the highest catches before were under 40.000 t. Catches of skipjack and bigeye were also higher than usual in this area in 2003, but to a lesser degree. Figures 22 and 23 show that these high catches were taken by a “stable” effort but with very high catch rates.

It could be envisaged that the exploitation of these rather new East African coastal fishing zones could increase the potential sustainable catches of yellowfin (if these fishes were part of a viscous stock, being permanent residents in these zones suffering a low exploitation rate, these fishes being a component of a cryptic fraction of stock). This hypothesis seems to be quite unrealistic.

As a final comment about the new fishing zones exploited by the purse seine fleet in 2003, it could be said that if large catches have been taken in 2003 in areas that were less productive before; however, it appears that these new fishing zones are clearly within the range of the traditional fishery. In such conditions, it should be considered that the 2003 fishery has been exploiting the same fractions of stock: there is very little hope to consider that such type of “new” 2003 fishing zones could increase the yellowfin catches in a sustainable way (this could be the case for instance if the 2003 fishing zone had been located

in remote areas, for instance in the Eastern Indian Ocean). The basic hypothesis now is that there was in 2003 a large biomass of yellowfin that was fully available to all fishing gear in a peculiar fishing zone.

The same type of comments could also be done on the longliners fishery, as the positive anomaly of yellowfin catches and CPUE has also been observed in the same peculiar fishing zone, suggesting a local phenomenon in the concentration and availability of yellowfin tunas.

### **3-2-3- An environmental anomaly in 2003?**

It is well known by fishermen and scientists alike that an anomaly in the physical environment can easily increase or decrease widely the CPUE of any fishing gear, for instance increasing or reducing the efficiency of the purse seiners when a thermocline gets very shallow or very deep, or increasing the availability of a given tuna biomass in an area where fishes are highly concentrated and easy to catch by all fishing gears. Such anomaly has been a source of deep concern for the Atlantic Ocean purse seine fishery, when in the first quarter of 1984, the Atlantic El Niño reduced the yellowfin CPUE of purse seiners during several months, see figure 28 (when the yellowfin stock was still in a reasonably good condition). However, it should be noticed that during this anomaly the longliners CPUE was maintained at a good level, being more representative of the real status of the adult stock.

Similar phenomenons were observed during the Indian Ocean 1998 El Niño, when low CPUE were observed for the purse seine fishery in the Western Indian Ocean, when the longliners CPUE in the area were maintained at good levels (see figure 28).

The apparent low biomass of tunas in the Mozambique Channel during the 2<sup>nd</sup> quarter of 2003 (noticed for the first time since 1983), could be an indication that there was some environmental anomaly in 2003, but such anomaly would need to be identified based on an analysis of the various environmental data, surface and subsurface, available on pelagic waters of the Western Indian Ocean (as the lack of fishing activity in the Mozambique channel could also be due to the good catches obtained simultaneously in the W Seychelles area, see figure 11)

Among the various environmental data of potential interest that could be used in order to identify such anomaly, the thermocline depth (measured by its proxy, depth of the 20° isotherm) has been analysed within 3 sub-areas of the 4-6°S and 40-55°E area in the 2003 fishing zone and in an area where large numbers of bathythermograph have been permanently collected by merchant ships. The overlook of this information<sup>8</sup> do indicate that when the 1983 and 1998 anomalies are clearly visible in each of the 3 selected sub-areas (deep thermocline), there was no visible anomaly in the thermocline depth in any of these zones during the year 2003 (figure 29): during 2003, the thermocline depth appears to be established at an average level.

Further environmental analysis should be conducted on other parameters (such as primary productivity of surface waters) in order to confirm or not this first result. This study should preferably be done at a fine geographical scale in the areas of major concentration of yellowfin catches by both purse seine and longliners. It should try to identify all the changes in the ecosystem, from its primary productivity to the various components of the pelagic ecosystem in the critical “anomalous area”.

### **3-2-4- A behavioural anomaly of large yellowfin in 2003?**

Various scientific studies recently conducted by scientists in the area (Potier et al. 2001, Potier et al. 2002, Potier et al. in press), have shown that a major change has been

---

<sup>8</sup> This analysis has been done by Francis Marsac

observed during recent years (since 1999) in the trophic chain exploited by tunas in the western Indian Ocean. This major change was in relation with the recent major increase of the biomass of a very small<sup>9</sup> pelagic crustacean, *Natosquilla investigatoris* (figure 23), in shallow waters of the Western Indian Ocean. The time and space extension of this crustacean is not yet clear, but there is no doubts that during the last 25 years (purse seine fishery) this species was very rare until recently, as it was never significantly observed since that year by tuna scientists working in the area, among them Bashmakov et al. 1992 and Roger 1994, who studied tuna feeding in the Indian Ocean. It was noticed from various sources that this species became very abundant during recent years in many areas of the Indian Ocean:

- Around Seychelles: in October 2001, large amount of *Natosquilla sp.* were beached on several islands such as Praslin.
- In Tanzania: Kamukuru and Mgaya (2004) observed in abundance since July 2000; the same species was also noticed in coastal waters and in the stomach contents of yellowfin tuna taken by the Tanzanian sport fishery.
- In Maldives (Charles Anderson personal communication)
- In the Mozambique channel around Europa (juillet 2002) and Glorieuses Islands (octobre 2002) (Potier et al, in press)
- Etc....

This crustacean has also been recently and often noted by all tuna skippers and by various scientists (Potier et al). It should also be noticed that this *Natosquilla* tend to live in shallow waters and in dense concentration. All skippers have frequently noticed that large concentrations of tunas, of large and small sizes, were often feeding in shallow waters upon this crustacean. It can be noticed that these *Natosquilla* are often eaten by large size yellowfin (sizes>1m) despite of the very small sizes of these individual (<10g) (Potier et al. in press), as well as by a variety of fishes and birds. The potential consequences of such peculiar feeding behaviour could be that these tunas concentrated in these shallow waters upon the schools of *Natosquilla* may become more vulnerable to purse seiners (being easily seen and easily caught). An additional hypothesis could also be that these shallow concentrations of *Natosquilla* could create tuna schools much larger than the usual ones, in relation with their unusual feeding (skippers have often described a peculiar feeding frenzy in these new type of feeding concentrations).

However, it is puzzling that this abundance of *Natosquilla* has apparently not produced any similar effect on juvenile yellowfin and bigeye and on skipjack, when all stomach contents analysis and observations at sea by skippers and scientist demonstrate that all these fishes were also feeding predominantly on *Natosquilla*. Their predominantly shallow distribution, their large abundance and density, their small size and their accessibility to predators (swimming very slowly) make them the perfect preys for all these small tunas. It is possible that skippers did not took profit of such a high potential catchability of juvenile yellowfin and bigeye and skipjack, because they were targeting their fishing effort to the more profitable large yellowfin.

It should however be noticed that this hypothesis would possibly be in contradiction with the high catches of yellowfin by Japanese longliners in 2003 in the same area: such shallow massive feeding of tunas should tend to reduce the catchability to the longline gear, as this gear is fishing in deeper waters (about 100m?) and as only the feeding tunas can be caught on the hooks: it has been noticed in Tanzania by Kamukuru and Mgaya, 2003 that large quantities of *Natosquilla* may tend to reduce the tuna catchability to hand line and pole and line gears, as tunas could be already fed by these easy to catch preys and as deep tunas may be more concentrated in shallow waters to feed on these *Natosquilla*.

---

<sup>9</sup> The average weight of a *Natosquilla* is less than 10 gram !

### 3-2-5- A sudden increased efficiency of the purse seine fleet in 2003?

#### Introduction

It has been well shown that the Indian Ocean purse seine fleet has been permanently increasing its fishing power since the beginning of this fishery in 1982 (results of the European Union ESTHER program, and analysis of the Shanghai IOTC 2002 WG). Most of the technological progresses tend to be introduced in the fishing vessels in a progressive way, but some of major ones have been introduced very quickly within a short period of time. Such changes tend to produce, at least temporarily, an increase of catches (in the same way as a fast increase of nominal fishing effort):

- When the targeted stock is not yet fully exploited, this increase of catches can be sustainable, then producing a higher level of sustainable catches (like an increase in nominal fishing effort on a moderately exploited stock).
- On the opposite, when the stock is already fully exploited or size-overfished (probably the present status of the yellowfin stock in the IO?), this higher 2003 catch due to the new technological progress and/or to a behavioural anomaly of adult yellowfin, will not be sustainable in the long run (these high catches being well in excess of the MSY then worsening the already fully exploited status of the stock).

#### Technological changes in the purse seine fishery

It has been noticed that during the period 2002 and beginning of 2003, most of the studied purse seiners have been equipped by new highly efficient long distance sonars. These new sonars are made by Norwegian (SIMRAD SP90) and Japanese (FURUNO) companies and they are both working in a range of frequencies between 20 et 30 Khz . Their theoretical maximum distance is within a range of about 7 to 8 km, but in practice they can identify a tuna school in a range between 3 to 4 km (when sonars previously used were reaching a distance less than 1 km). These sonars are now permanently used:

(1) in the purse seine **searching activities**, this sonar becomes an additional tool allowing to locate sub-surface or deep tuna schools that would not have been visible on the surface (for instance in the absence of bird flocks).

(2) in the **follow up of tuna schools** associated to FADs: the new sonars do allow a comprehensive evaluation of the tuna biomass scattered in the vicinity of the FADs; when an invisible biomass of tunas has been identified in sub-surface waters, this acoustic survey do allow to wait around the FADs and later to set upon it.

(3) when the purse seine is deployed upon a mobile free school, this new high performance sonar allows a more efficient follow up of the school behaviour during the **setting operation**, then potentially improving the success rates of setting operations. However, it can be noted that the success rate of free schools sets (as estimated from the log book data) in 2003 was an average one (57%) (compared to the 57% estimated in 2001 and 59% in 2002), and then this improvement of the success rate in the setting of the net cannot be identified by the analysis of success rate, keeping in mind that there is still the possibility that the new sonar do allow to more efficiently and entirely catch the larger schools increasing the catch per set (Figure 6).

There is no yet any scientific study of the potential quantitative effects of this new sonar on the efficiency of the purse seine fleet, but there is very little doubt that these new sonar tend to (significantly?) increase the purse seine efficiency, improving both the efficiency of the **searching** activities as well as the efficiency of **setting** the purse seine. However it can be noted that these effects of the new sonar will be difficult to analyse, as even if the date of introduction of this new equipment is well known for every purse seiners,

the entire purse seine fleet, Spanish and French, did acquire this equipment within a very short period of time.

The widely positive effects of the new sonar are now unanimously recognized by all the Indian Ocean tuna skippers, and these sonars are considered as being a major progress conditioning their fishing efficiency (Spanish and French alike). Then it can be concluded that the use of the new sonar during 2003 did play a positive role to determine the high yellowfin catch rates obtained in 2003 by purse seiners in the Indian Ocean and the high frequency of very large sets.

### **New sonar in the Atlantic fisheries**

However, it can be noticed that the other EU purse seine fleet that was simultaneously fishing in the Atlantic Ocean had also introduced the same sonar technology during the same period. The comparison of the 2003 catch rates obtained by these two fleets in the two oceans shows a very different result in the Atlantic, where it appears that the 2003 purse seine CPUEs were stable for both free and FAD associated schools in 2002 and 2003, when the number of sets was increased by 33% (e.g. taking a much smaller average set). This result would tend to indicate either that (1) the effect of these sonar are different in each ocean and less effective in the Atlantic (for instance in relation with stock biomass, the environment or school behaviour), or (2) that the quantitative effects of the new sonar would tend to be minor ones in both oceans (the high 2003 Indian Ocean CPUE being then explained by other factors such as the *Natosquilla* hypothesis). There is also some potential positive interaction between the increase detection facilities offered by the new sonars and the effects of *Natosquilla*. In such case of interaction, the benefit of efficiency due to these sonars would have been lower without the *Natosquilla* effects (the Atlantic case).

### **3-2-6- Conclusion on the causes explaining the 2003 catch anomaly**

It remains difficult, due to the limited statistical information available, to precisely conclude on the causes explaining the 2003 positive catch anomaly of large yellowfin by purse seiners. At this stage, the preliminary conclusion would be that this high 2003 catch was probably due to an **increased catchability of the stock and not to its increased biomass** (or to an increased biological productivity of the stock). This temporary increase of catchability seems to be due to a combination of a technological factor (such as the new long range sonar recently installed on the purse seine fleet), and a behavioural factor of yellowfin tuna, as its feeding behaviour on *Natosquilla* may be increasing the vulnerability of the stock to the purse seiners. The same atypical fishing zones observed for the purse seine and longline fisheries in 2003 could be in relation with **large concentration and large availability of yellowfin tuna in a peculiar and rather small area of the South Western Indian Ocean**. It should also be kept in mind that the great numbers of very large sets observed in 2003 have clearly contributed to the record high catches by purse seiners during this year, and they can also be explained by a combination of behavioural effects (*Natosquilla*) and technological effect (new sonar), and large biomass of yellowfin concentrated in a small area.

## **4- Overview upon present yellowfin stock status and prospects in 2004**

### **4-1- Introduction**

Recent stock assessment analysis done by scientists within the IOTC framework have concluded that the Indian Ocean was already fully exploited and possibly overfished, at least in the Western Indian Ocean, the area where most of the yellowfin catches are taken (IOTC

Shanghai WG in 2002). This diagnosis can be simply summarized by the trend of total catches of yellowfin during recent years in the Indian Ocean: it appears that these catches have been slowly declining during the last 10 years (figure 18), despite of the steady increase of effective or/and nominal fishing efforts developed during this period by multiple fleets (purse seine, artisanal and longline, each of these three components being significant in the Indian Ocean yellowfin fisheries). It should be noticed that the new set of catch data recently released by the IOTC has been showing significant increase of total catches (by artisanal fisheries) since the last IOTC stock assessment; it appears that the trends of this new series are very similar to the old ones, then probably confirming the present stock status. This basic conclusion is also well expressed in term of the Grainger and Garcia index showing on the new catches series the decline of the rates of catch increases observed in the area during recent years (figure 19), in opposition with their spectacular jump upwards in 2003.

This analysis of stock status conducted in 2002 by the IOTC Shanghai WG did estimated that, the stock has suffered a long period of slow decline during the period 1950-1982 during which the stock was still moderately exploited primarily by longline fisheries (Figure 25); since the early eighties the stock biomass has clearly shown a quite significant decline due to its increased exploitation by the various gears, purse seine, longliners and artisanal fleets.

#### **4-2- Changes in stock size and/or in its exploitation rate?**

It will be necessary to redo a comprehensive updated analysis of the yellowfin stock status based on the complete fishery data, but there is no doubt that this new analysis will be facing the same structural uncertainties as the present overview. Basically the model used and accepted as the best one, will need to choose among the various hypothesis presented in the paper, mainly choosing between:

(1) the constant fleet efficiency hypothesis, then accepting and increased stock biomass in 2003 due either to increased recruitments or to increased biological productivity of the yellowfin stock.

(2) the increased catchability hypothesis, where this increased  $q$  can be due to a combination of technological factors (such as new sonars) , changes in fish behaviour (for instance in relation with their new feeding on *Natosquilla* concentrations) and changes in the stock geographical distribution, the stock being more heavily concentrated and suffering a higher catchability to all gears because of its concentration.

(3) or a combination of these various sets of factors.

At this stage, it should be considered that if the hypothesis (2) is valid, e.g. **very large catches due primarily to increased efficiency or to an increased vulnerability of the stock**, the status of the yellowfin stock could become very quickly a source of serious concern: if the stock was really fully exploited since the late nineties, the sudden increase of 50% of yellowfin catches by purse seiners do correspond to a corresponding increase of their effective effort: this increase would be for instance equivalent to the arrival of about 30 new vessel targeting yellowfin in the present fleet of 60 purse seiners.

Further analysis are urgently needed to evaluate the trend of the adult stock, but there is no doubt that if the previous IOTC analysis was correct, the Indian Ocean yellowfin stock could be very soon in deep trouble of being severely overfished, especially if the high catches by purse seiners are maintained during 2004 and onwards.

### **4-3- Stock and fisheries prospects for 2004 onwards**

Landing data of yellowfin taken by purse seiners during the first half of 2004 were also analysed in order to check if the 2003 catch anomaly was also observed in 2004. It appears that the landing of yellowfin during the first 6 months by French purse seiners were very high, about 10% higher than 2003 yellowfin catches (but with a very low SKJ catch).

## **5- Conclusion**

After about 10 years of a remarkable stability, the situation of the Indian Ocean yellowfin fisheries and stock have been showing major and fast changes since the end of 2002. The reasons of these changes and their future consequences on the sustainable exploitation of the yellowfin stock are still highly questionable, primarily due to the lack of data and lack of a subsequent comprehensive stock assessment. There is no doubt at this stage that the present situation should be a source of serious concern for scientists, fishermen and the IOTC managers. There is no doubt that an in depth and comprehensive updated analysis of the stock status should urgently be conducted on this stock as soon as possible when a majority of the 2003 catch effort and size data will be available to the IOTC. This new assessment should also analyze with great care the potential environmental anomalies that could have been developed in the South Western Indian Ocean area during recent years and especially in 2003 (as such anomaly could change the catchability of the stock or its biological productivity). It should also be kept in mind at least as a working hypothesis, that the new geographical concentration zone of the adult yellowfin observed since the early 2003 could also modify, positively or negatively, the success of future recruitments. This point of the 2003 and 2004 year class strength should then be closely monitored.

It should also be kept in mind by the IOTC scientists, that in the concept of a precautionary approach, the very large and still widely unexplained 2003 catches of yellowfin could well lead the IOTC Scientific Committee and Commission to new management recommendations: The real present status of yellowfin stock is still unclear, but after this analysis of available data, there is a high probability that the new catches will not be sustainable. In this uncertain but risky scenario, a precautionary management should well be promoted in order to reduce the yellowfin catches, and then the risks of stock overfishing (even if these risks are still quantitatively unknown).

#### Cited bibliography

- Bashmakov, V.F., Zamorov, V.V. and Romanov, E.V. (1992) Diet composition of tunas caught with long lines and purse seines in the western Indian Ocean. TWS/91/31 Workshop on stock assessment of yellowfin tuna in the Indian Ocean. 7-12 october 1991, Colombo, *IPTP*: 53-59.
- Die D., V.R. Restrepo and W.W. Fox 1990. Equilibrium production models that incorporate fished area. *Trans. Am. Fish. Soc.* ; 119 ; pp 445-454.
- Fonteneau A., D. Gascuel et P. Pallares 1998. Quelques réflexions sur certains problèmes méthodologiques dans l'évaluation des stocks migrateurs. *Rec. Doc. Scient. ICCAT Vol. L(2)*, pp 523-564.
- Kamukuru A.T. and Mgaya Y.D., 2003. The food and feeding habits of blackspot snappers, *Lutjanus fulviflamma* (Pisces; Lutjanidae) in shallow waters of Mafia island, Tanzania. *Afr. J. Ecol.*, 42, 49-58
- Laloe F. 1989. Un modèle global avec quantité de biomasse inaccessible dependent de la surface de pêche. Application aux données de la pêche d'»albacore (*Thunnus albacares*) de l'Atlantique est. *Aquat. Living Resour.* ;1; pp 289-298.
- Nishida T. and Y. Shiba 2004. Preliminary investigation of the high catch (2003) of yellowfin tuna (*Thunnus albacares*) in the tropical Western Indian Ocean based on the Japanese longline data. Document IOTC/WPTT/2004.
- Potier M, Marsac F., Lucas V., Sabatié R. Hallier JP . and Ménard F., 2004(in press). Feeding partitioning among tunas taken in surface and mid-water layers : the case of yellowfin (*Thunnus albacares*) and bigeye (*Thunnus obesus*) in the western tropical Indian Ocean. *Western Indian Ocean Journal of Marine Science*
- Potier, M., Sabatié, R., Ménard, F., and Marsac, F. (2001) Preliminary results of tuna diet studies in the West equatorial Indian Ocean. 3<sup>rd</sup> session of the IOTC working party on tropical tunas, Seychelles, 19-27/06/2001. WPTT/01/03. *IOTC Proceedings 4* : 273-278.
- Potier, M., Lucas, V., Marsac, F., Sabatié, R. and Ménard, F. (2002) On-going research activities on trophic ecology of tuna in equatorial ecosystems of the Indian Ocean. 4<sup>th</sup> session of the IOTC working party on tropical tunas, Shangai, Chine, 3-11/06/2002. WPTT/02/24. *IOTC Proceedings 5* : 368-374.
- RAVIER C. and J. M.FROMENTIN 2004. Are the long-term fluctuations in Atlantic bluefin tuna (*Thunnus thynnus*) population related to environmental changes? *Fish. Oceanogr.* 13:3, pp 145-160.



Roger, C. (1994) Relationships among yellowfin and skipjack tuna, their prey-fish and plankton in the tropical western Indian Ocean. *Fish. Oceanogr.* **3** (2): 133-141.

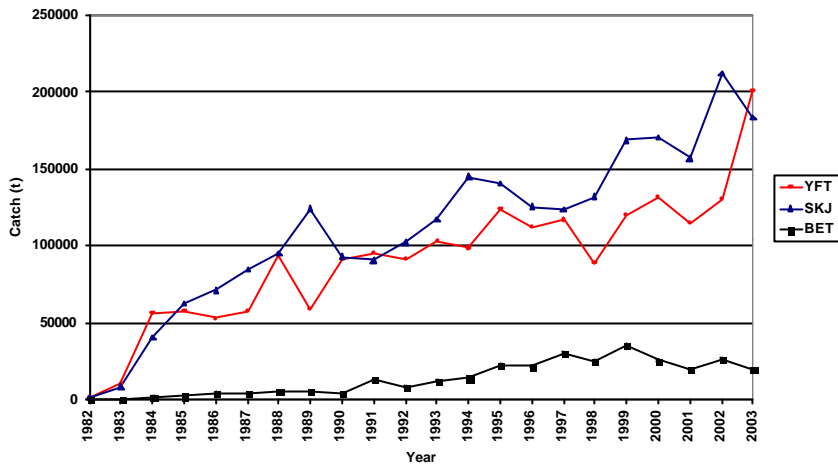


Figure 1: Catches by species taken by the sampled purse seine fishery

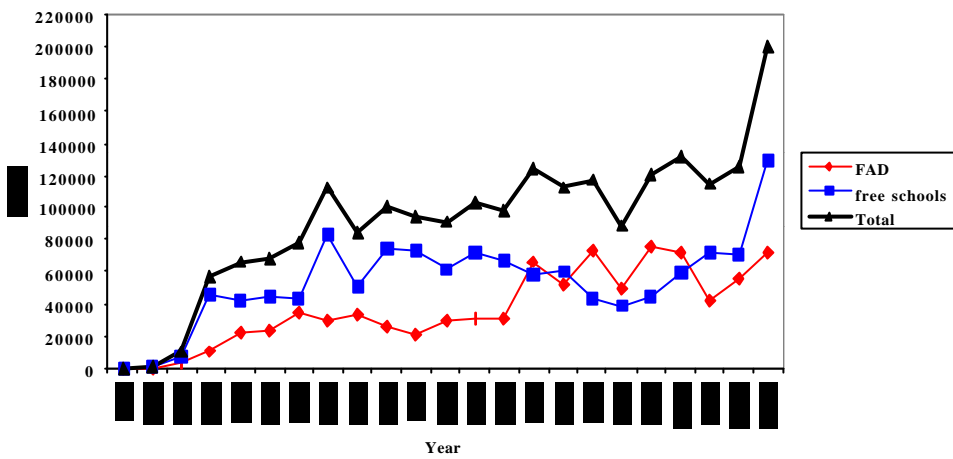


Figure 2: Catches of yellowfin taken on FAD, on free schools and total, by the studied fishery.

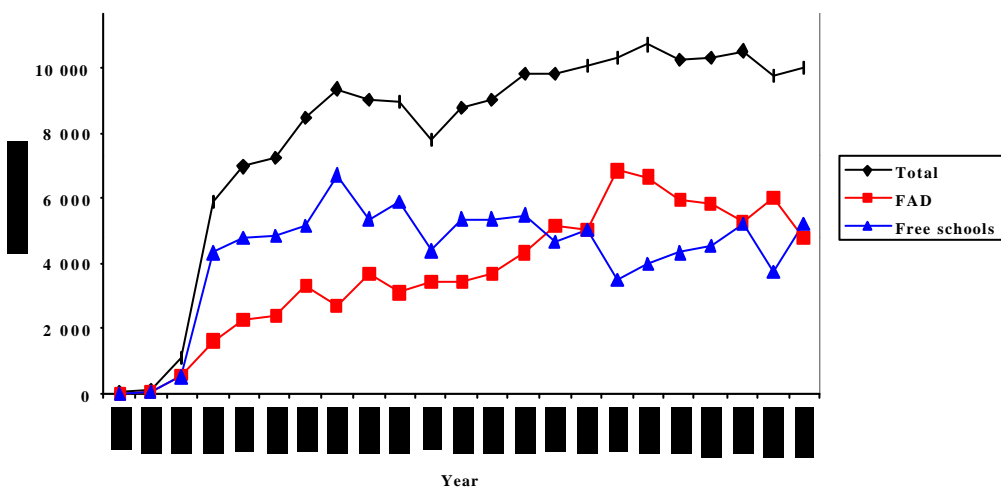


Figure 3: Numbers of sets by the PS fishery on FADs, on free schools, and total.

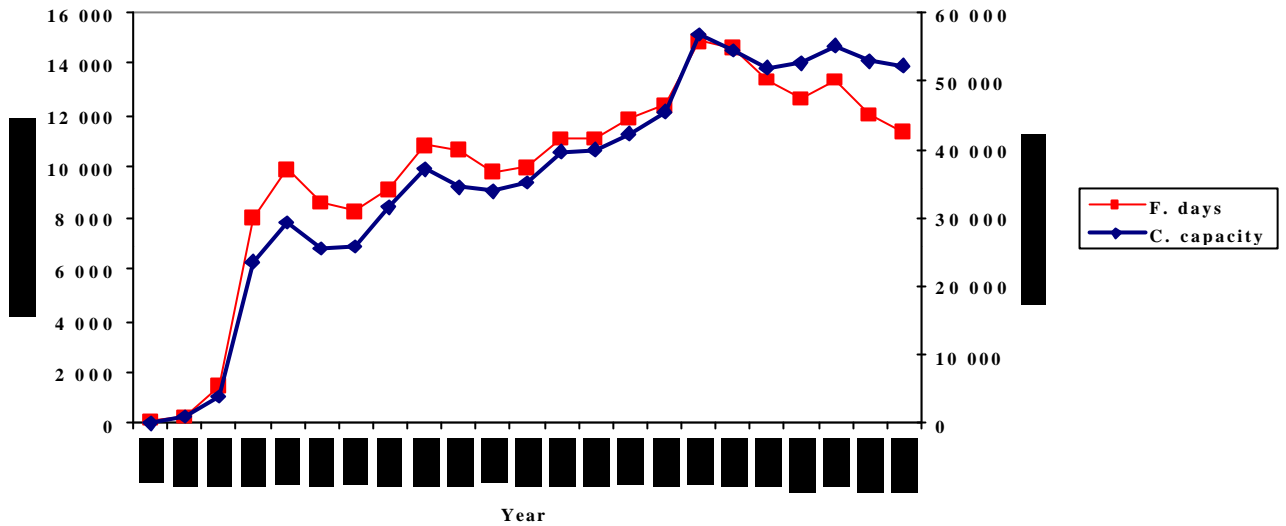


Figure 4: Fishing effort by the sampled PS fishery expressed in term of its carrying capacity and of fishing days

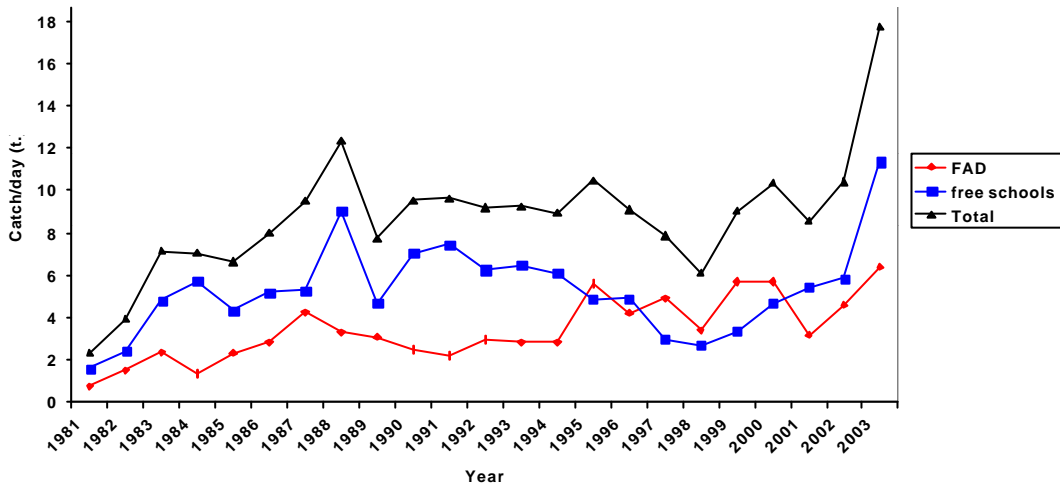


Figure 5: Yearly CPUE (catch / fishing day) in the FAD, in the free school fishery and in the average PS fishery.

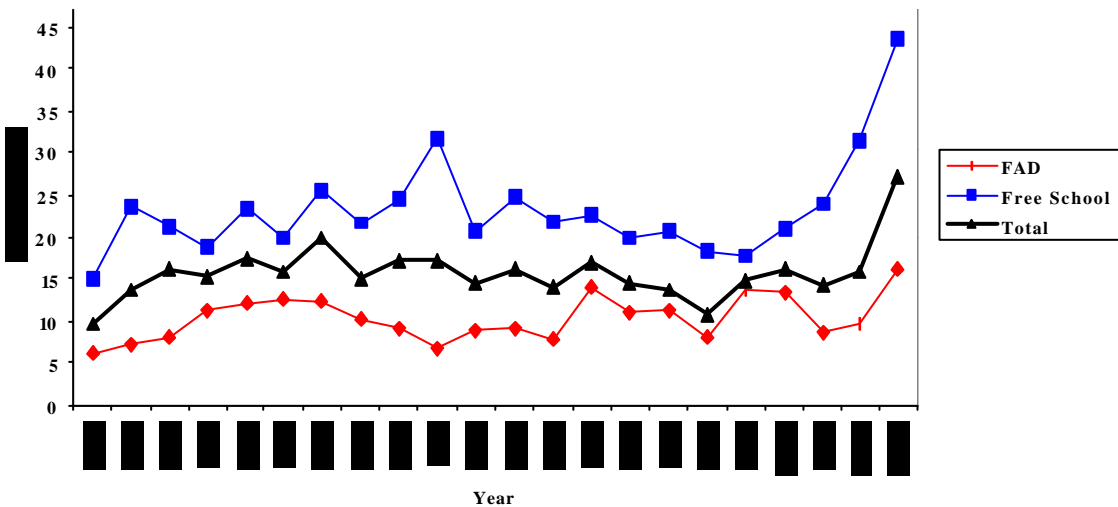


Figure 6: Average yearly catches per set in the sampled PS fishery, on FAD and free schools, and total

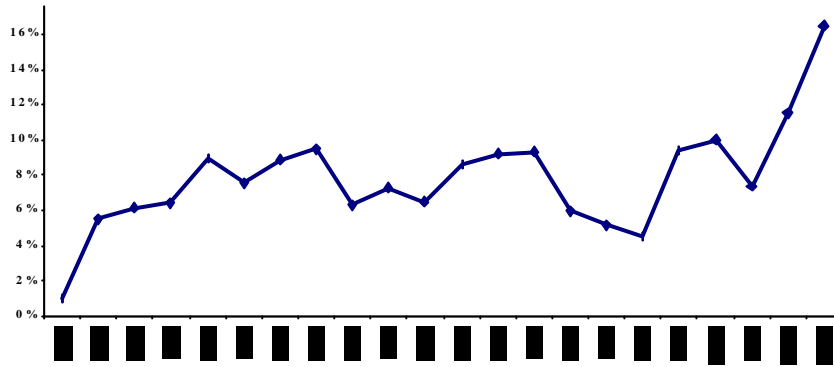


Figure 7 : Average yearly percentages of large sets (>100tons) in the PS fishery

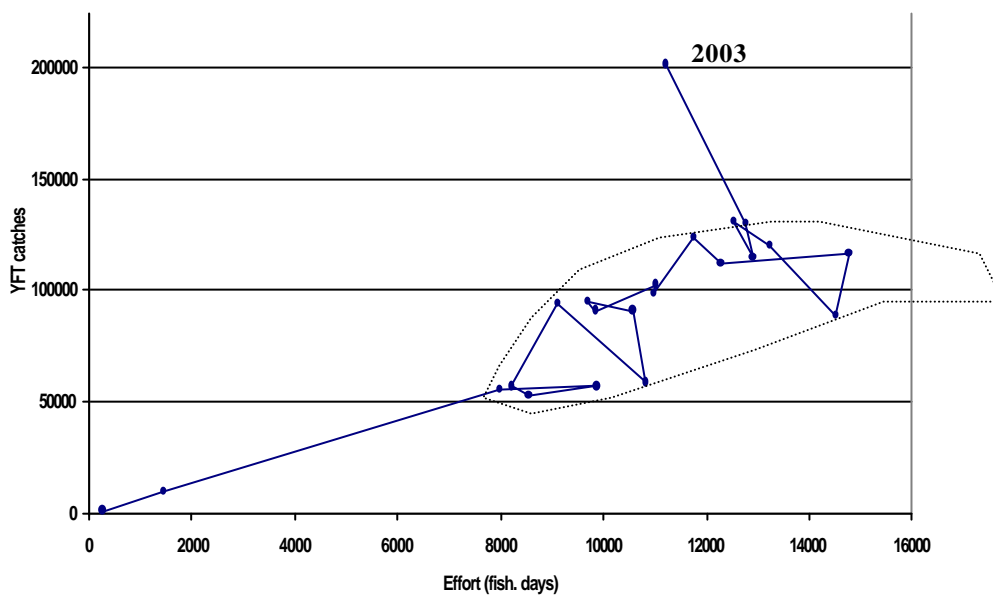


Figure 30: Relationship between yellowfin catches by the fleet of EU purse seiners and their yellowfin catches during the period 1982-2003

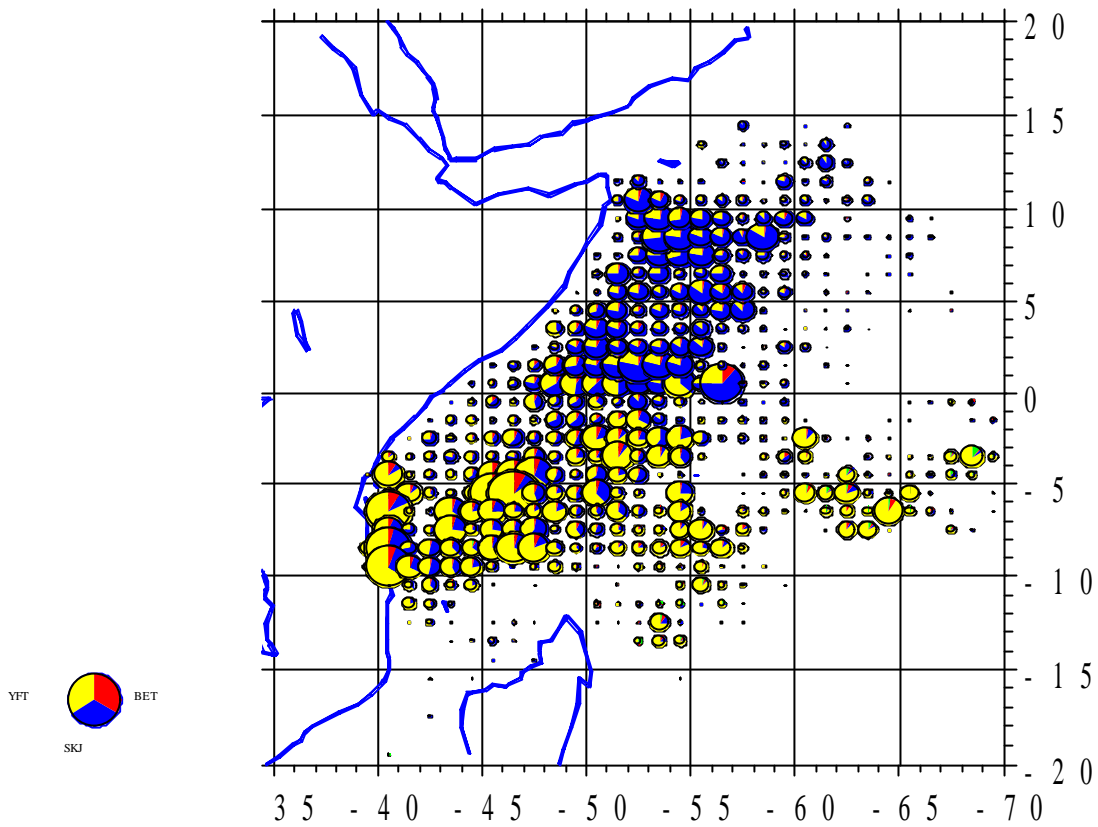


Figure 8 : Fishing zones of the sampled PS fishery during 2003 for the 3 species, yellowfin, skipjack and bigeye

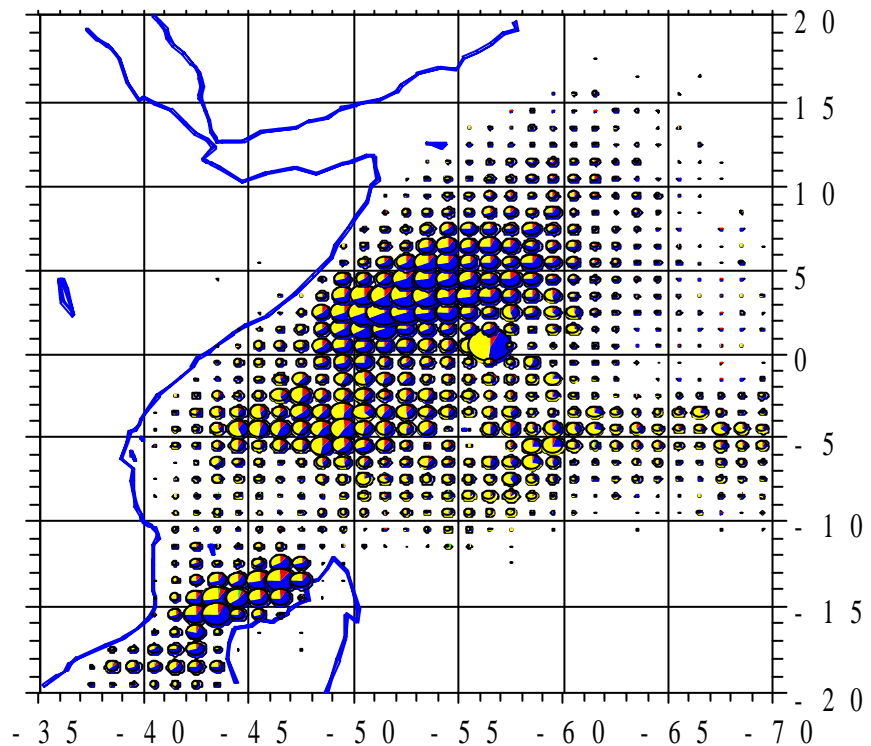


Figure 9: Fishing zones of the sampled PS fishery during the average period 1995-2001 for the 3 species, yellowfin, skipjack and bigeye

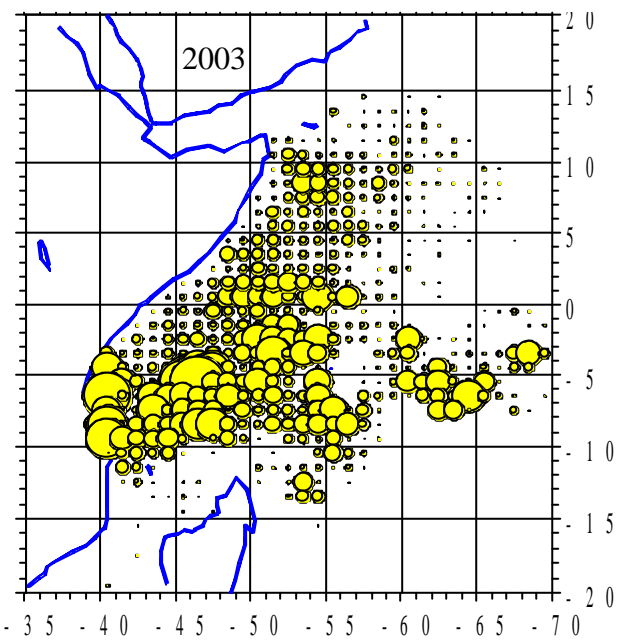
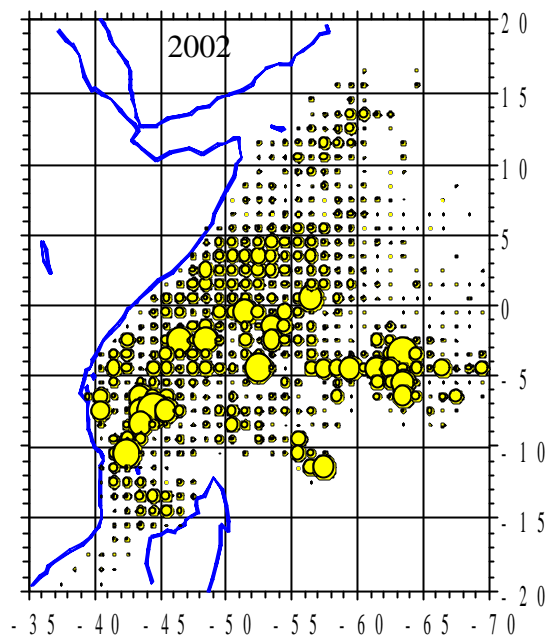
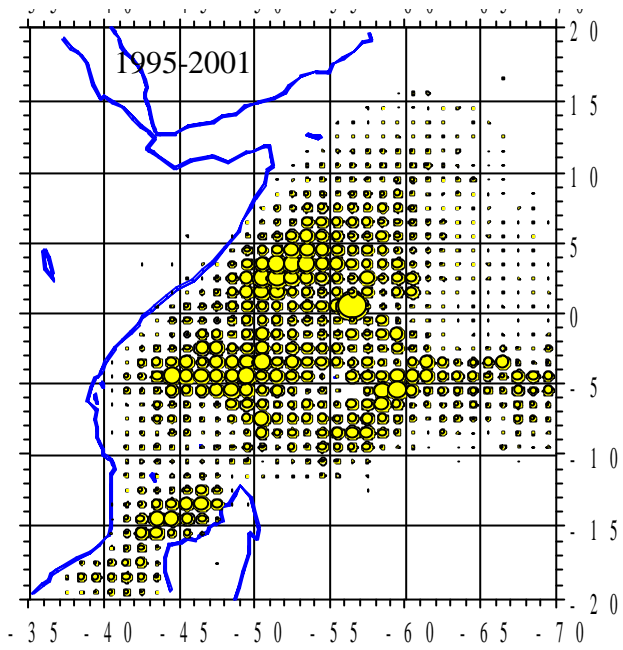


Figure 10 : Maps of the yellowfin PS catches in the sampled fishery during the average years 1995-2001, during 2002 and 2003.

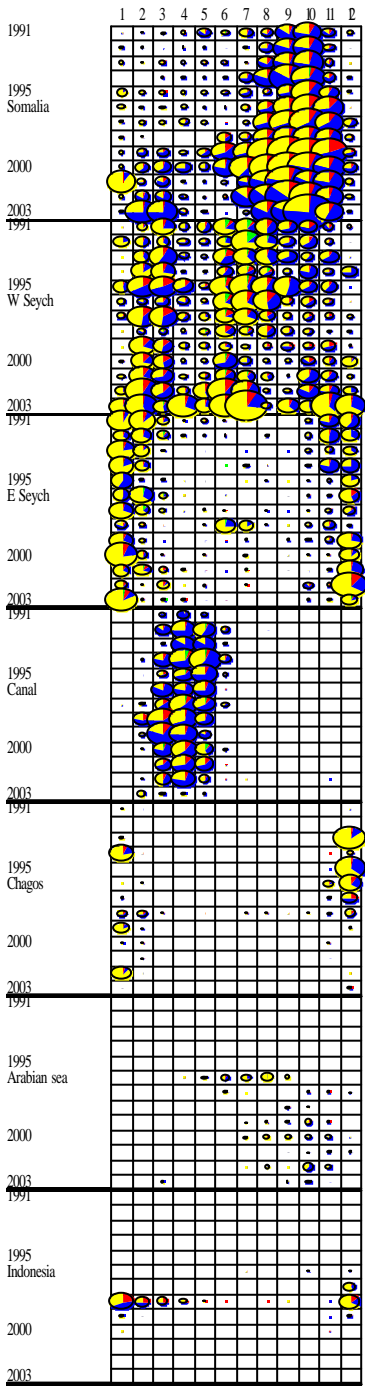


Figure 11 : Pie Diagram showing the monthly catches by the sampled PS fishery in each area

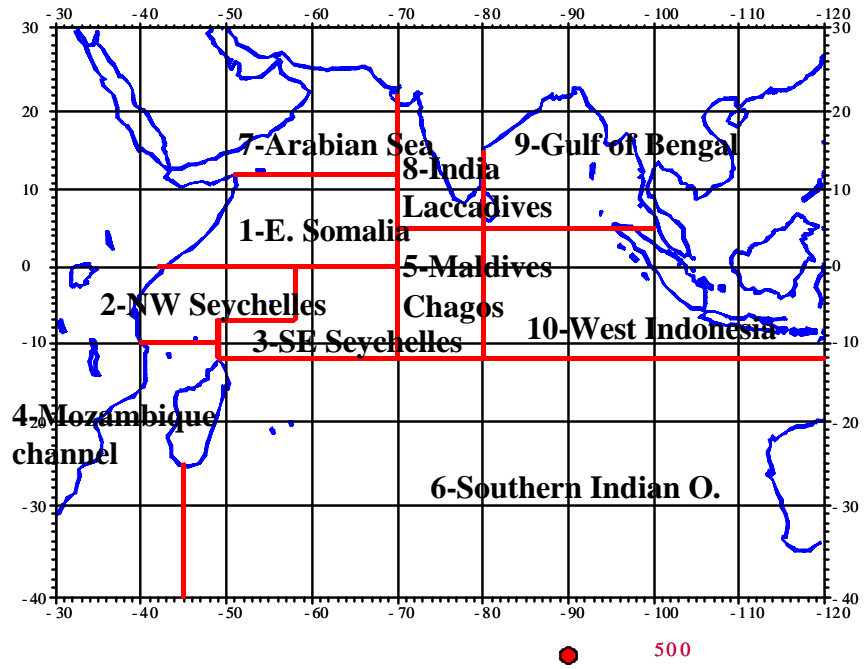


Figure 12: Map showing the areas used to show the monthly catches by species taken by PS.



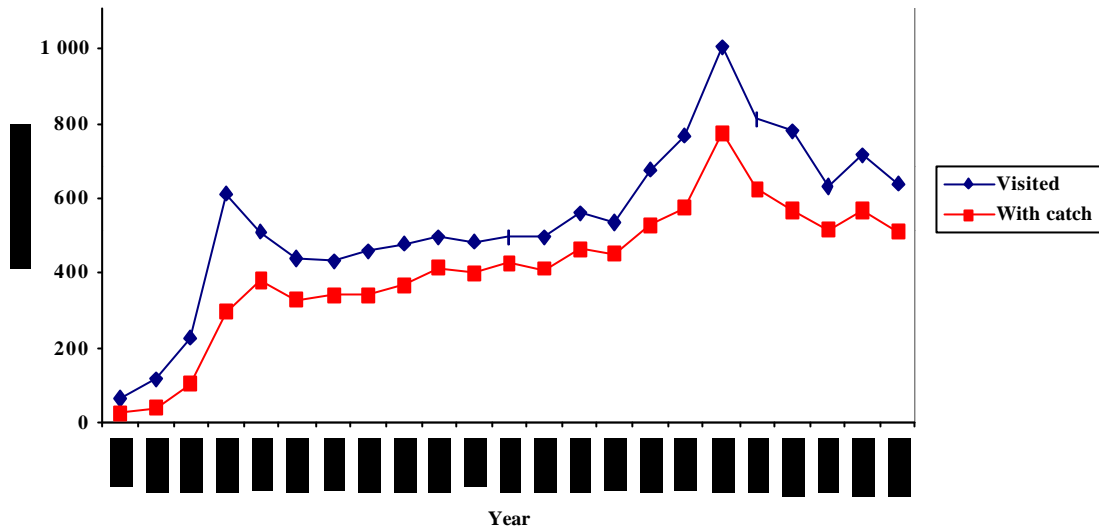


Figure 13: Size of the fished area, yearly, measured by the numbers of 1° squares visited by the PS fishery, and with a tuna catch.

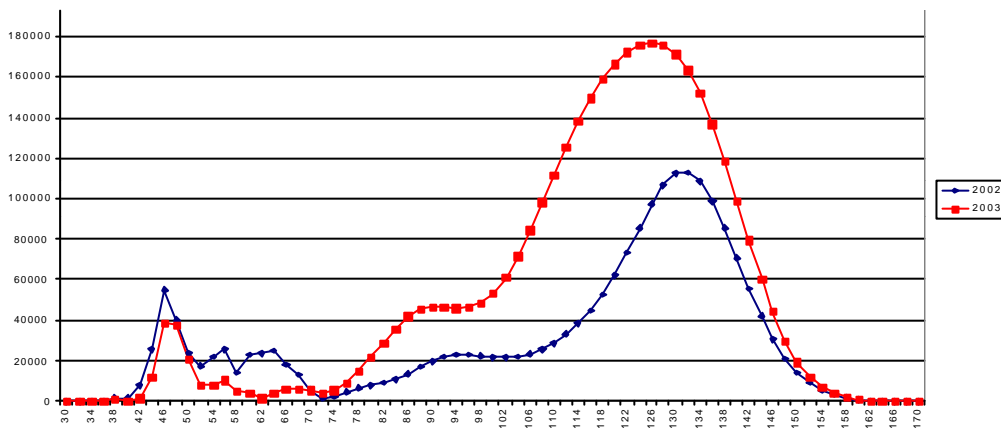


Figure 14 : Yearly size distribution of yellowfin, in weight (kg), taken by PS in 2002 and 2003 on free schools

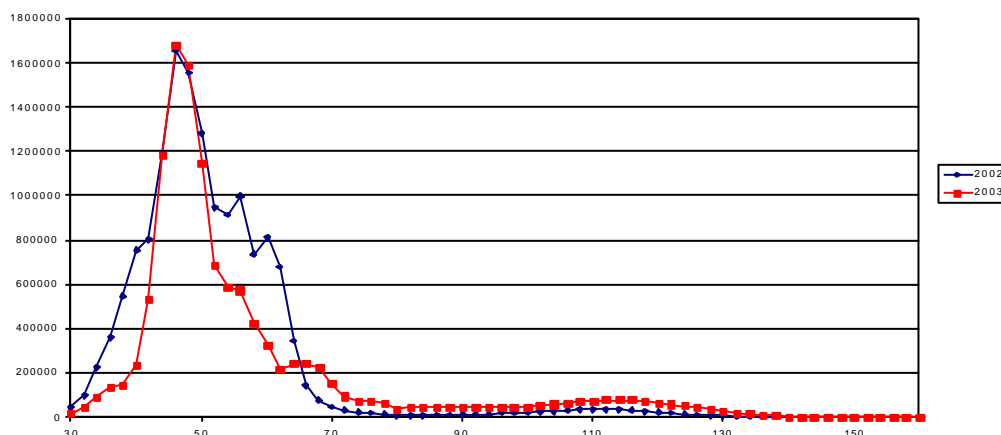


Figure 15: Yearly size distribution of yellowfin, in weight (kg), taken by PS in 2002 and 2003 on FAD schools



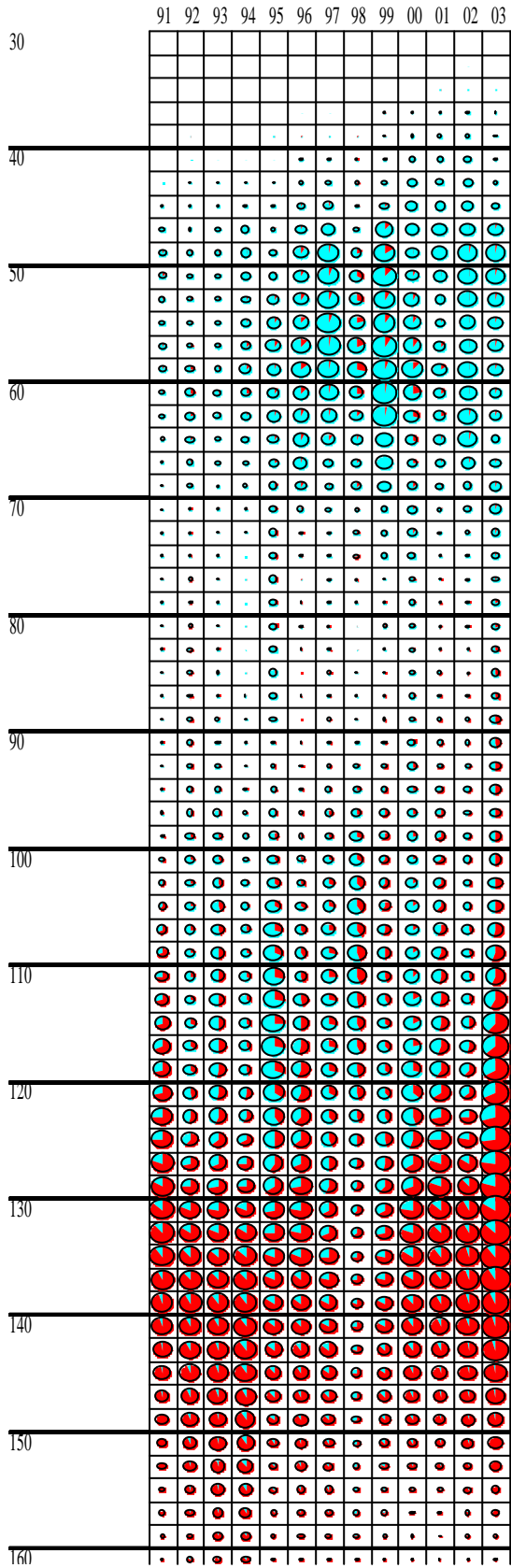


Figure 16: Catches of yellowfin by size, in weight, taken by PS on FADs (blue) and on free schools (red)

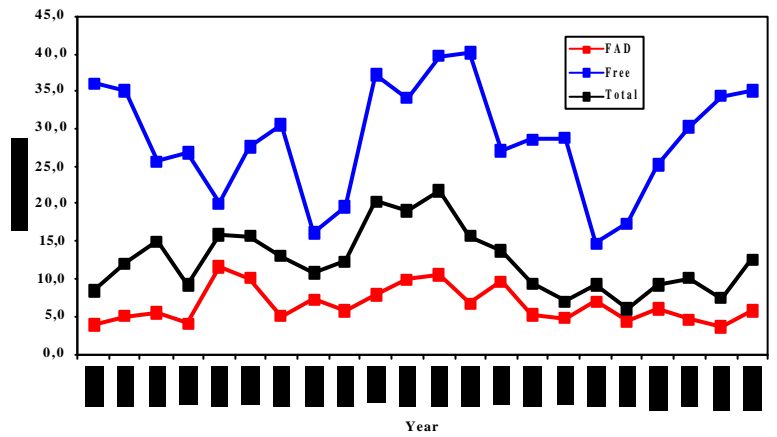


Figure 17: Average weight of yellowfin taken by the PS fishery under FADs and in free schools.

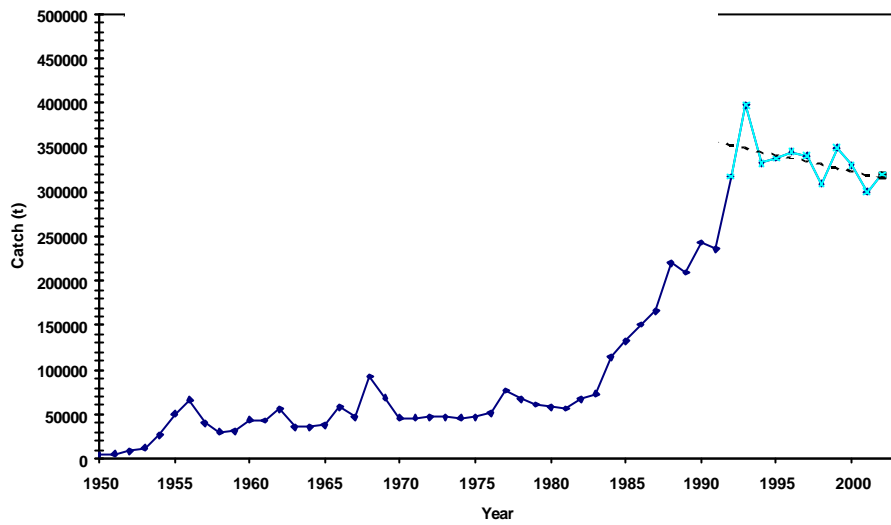


Figure 18: Total yearly catches of yellowfin in the Indian Ocean between 1950 and 2002, linear trend of the 1992-2002 catches and estimates of the total yellowfin catches in 2003 (this figures shows the new 2004 series of revised catches)

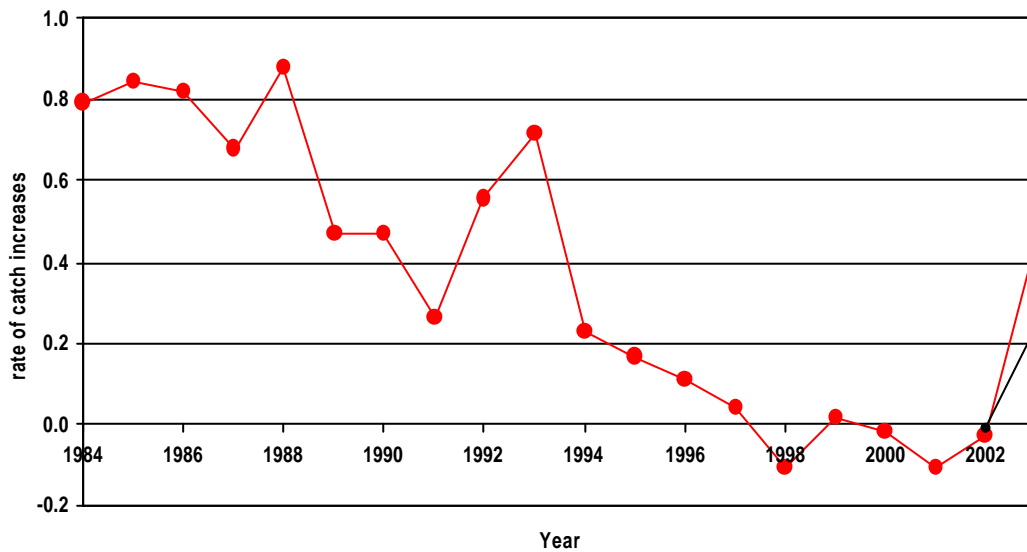


Figure 19: Rate of increase of yellowfin catches (Grainger and Garcia index) in the Indian Ocean (2003 being estimated)

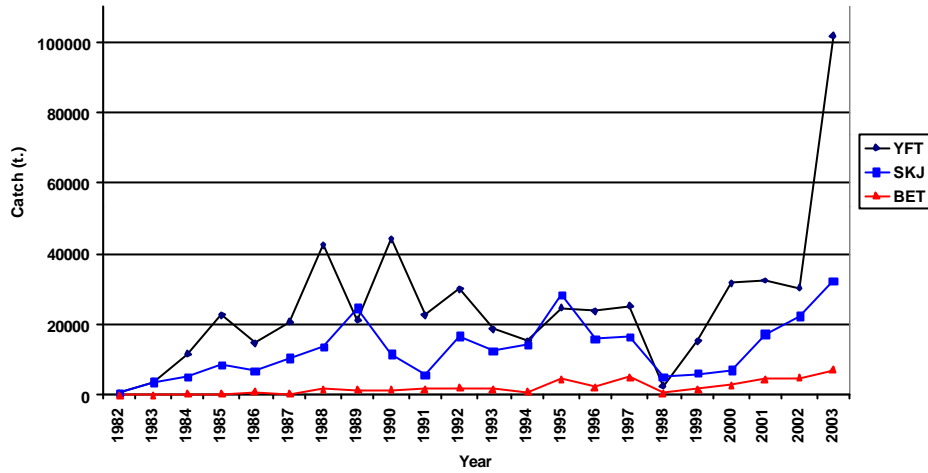


Figure 20 : Tuna catches by species taken yearly by purse seiners in the 5° to 10°S, west of 65°E area.

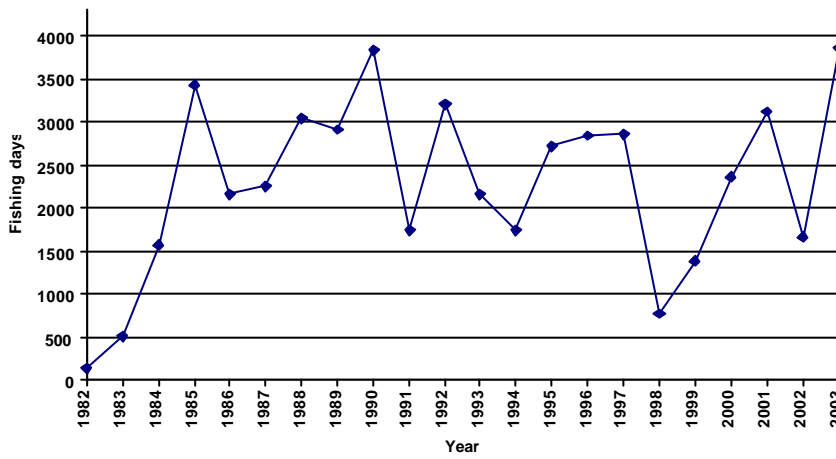


Figure 21 : Fishing effort (fishing days) exerted by purse seiners in the 5° to 10°S, west of 65°E area.

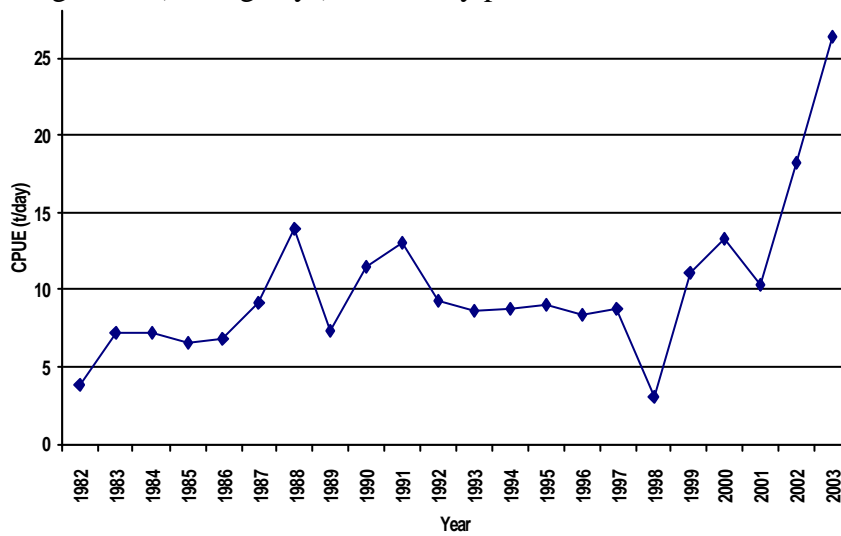


Figure 22: Yellowfin CPUE of purse seiners (yearly catches/efforts) in the 5° to 10°S, west of 65°E area.



Figure 23: *Natosquilla investogatoris*

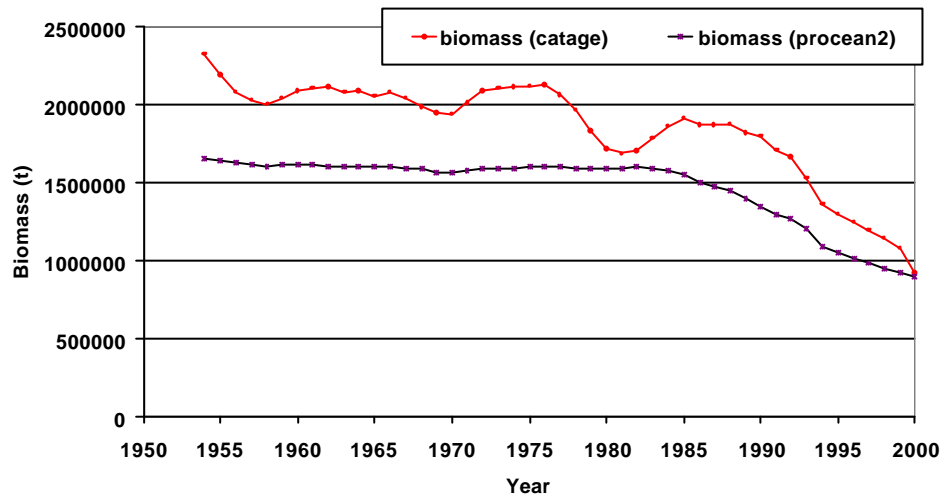


Figure 24: Biomass of the Indian Ocean yellowfin stock estimated in 2002 by the IOTC Shanghai WG.

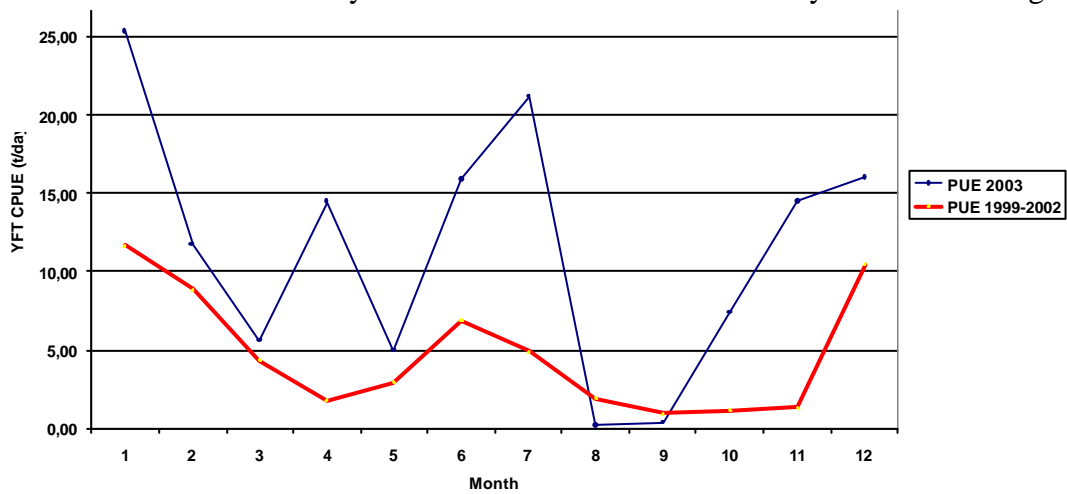


Figure 25 : Monthly CPUE of purse seiners on free schools of yellowfin in 2003 compared to the YFT CPUE during the average period 1999-2002

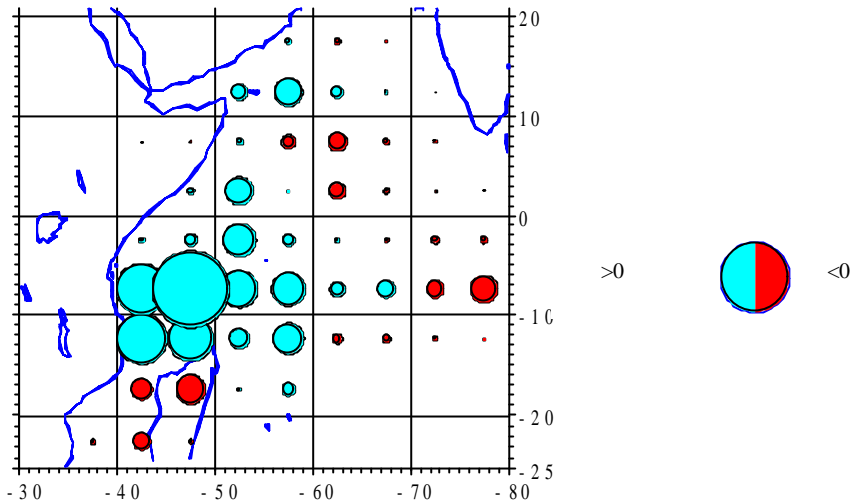


Figure 26: Differential catches of yellowfin by PS in 2003: map of the average yellowfin catches during the year 2003 minus the average catches during the period 1993-2002 (The areas with an excess of 2003 catches are shown in light blue, negative in red//dark )

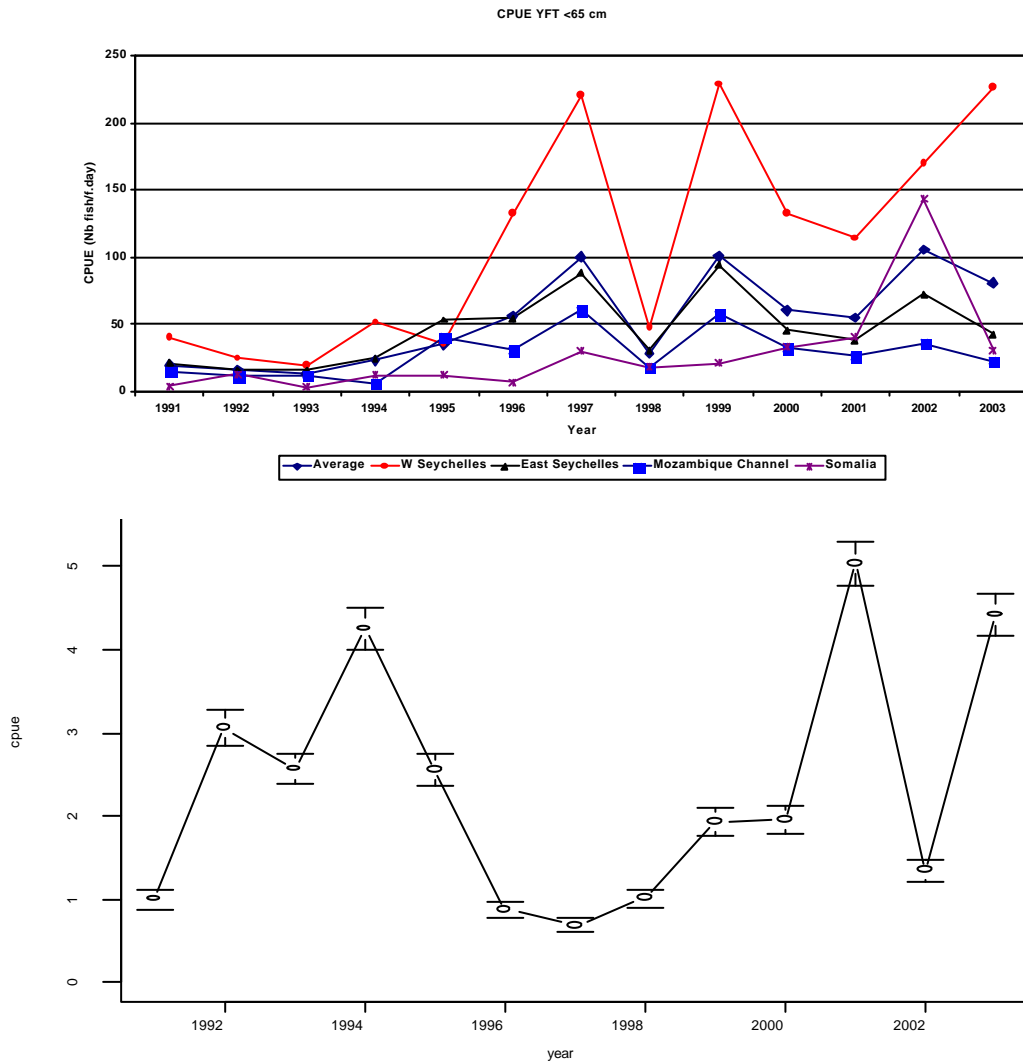
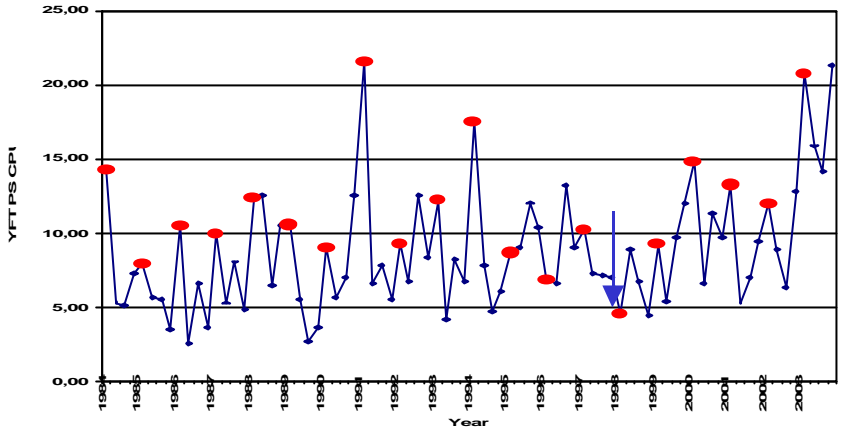
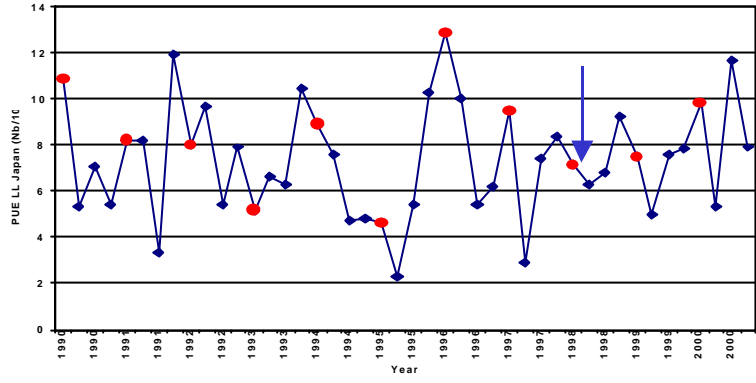


Figure 27: YFT CPUE of small YFT (<65 cm) of the EU purse seiner on free and on FAD associated schools in the Indian Ocean: nominal CPUE (upper fig.) and nominal CPUE (lower)

# Indian Ocean

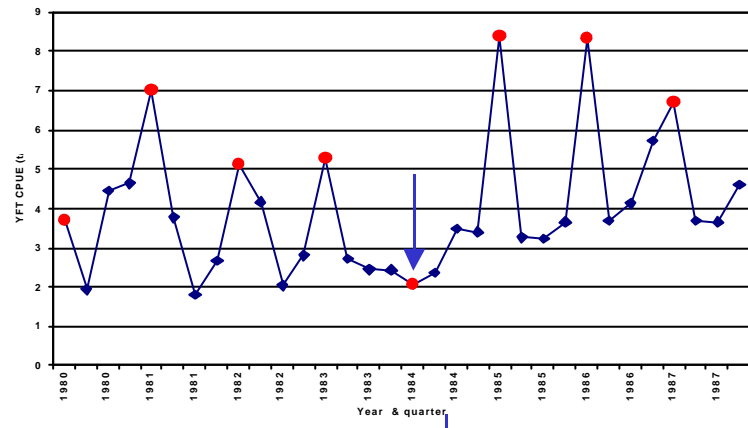


Purse seine

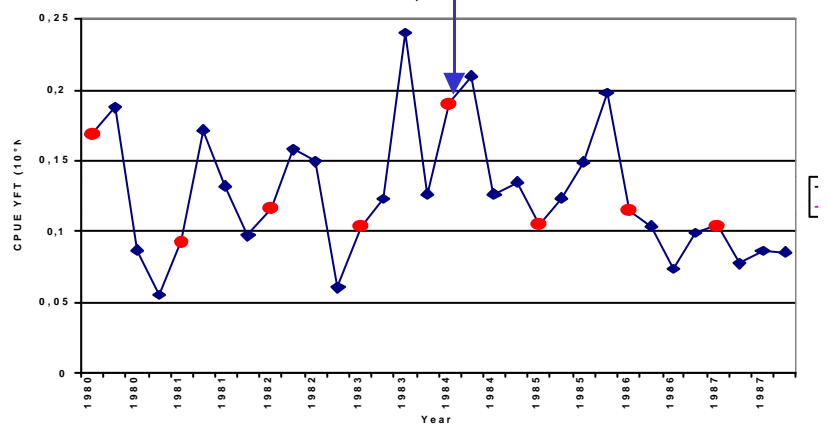


Longline

# Atlantic



Purse seine



Longline

Figure 28: Quarterly yellowfin nominal CPUE in the Atlantic and Indian Oceans in the equatorial areas (10°N-10°S) (LL catches in the Indian Ocean; assuming a stable nominal effort, this figure should be indicative of abundance fluctuations). The levels observed for PS and LL in the Atlantic during the first quarter of 1984, and in the Indian Ocean during the first quarter of 1998 should be compared

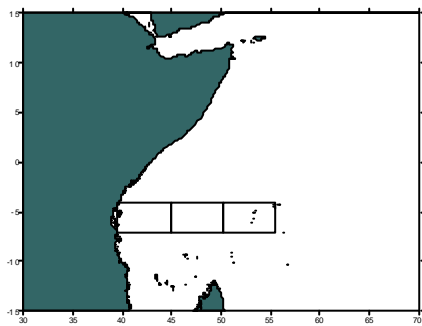
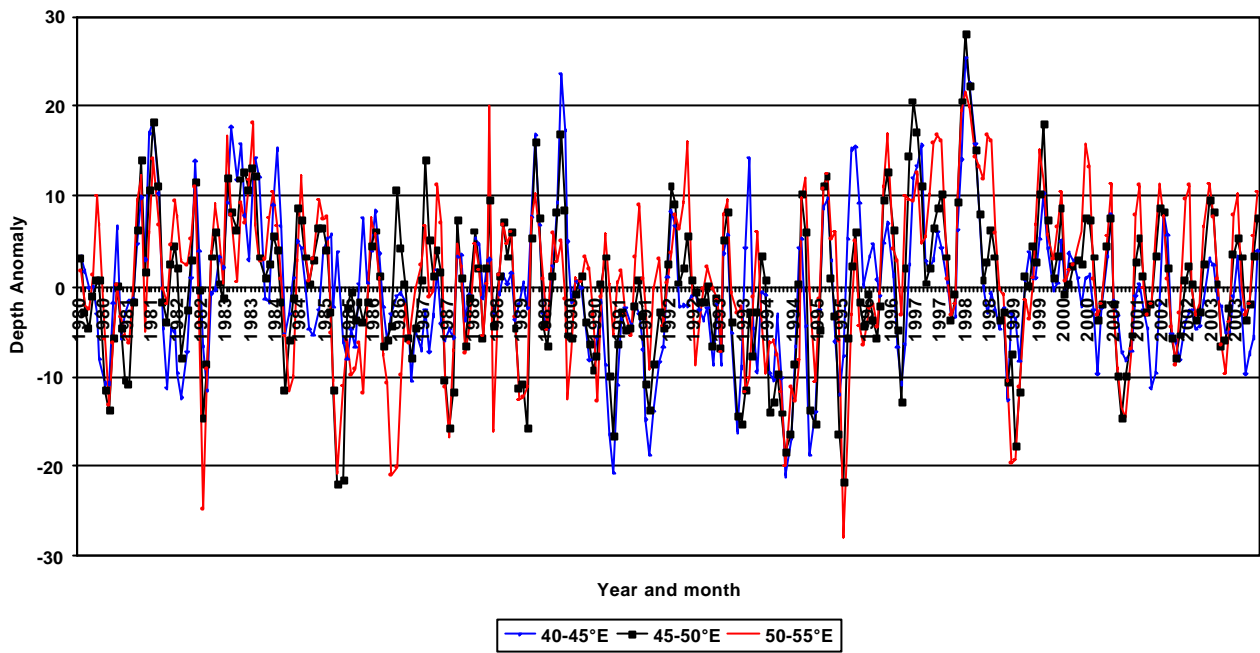


Figure 29: Monthly depth anomaly of the thermocline (measured by its proxy, depth of the 20° isotherm) in 3 selected areas during the period 1980-2003 (the reference period used to calculate this anomaly was the period 1950-2003); the selected area (4-6°S, 45-55°E) and its 3 sub-areas are shown on the bottom figure.

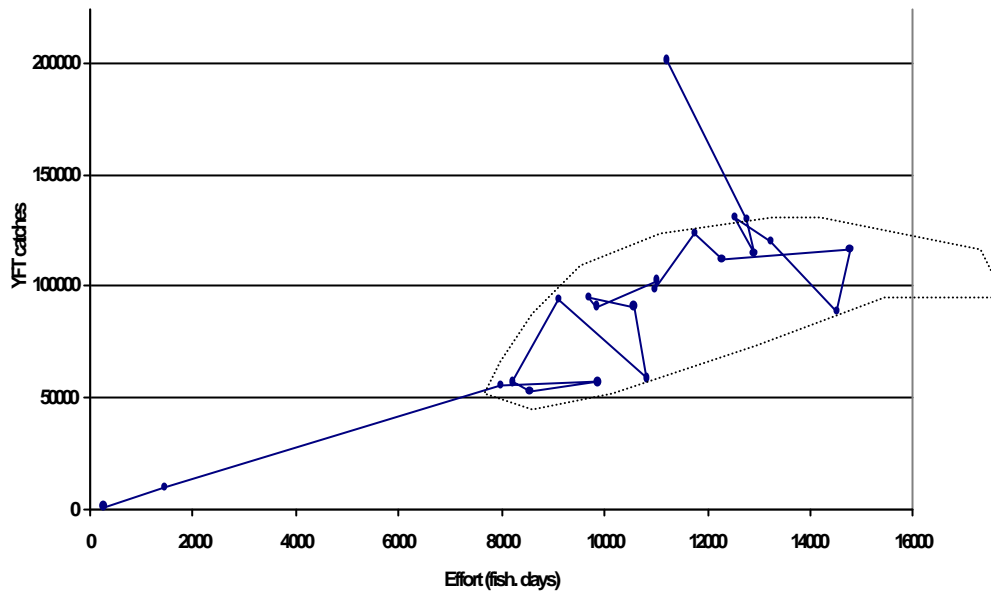


Figure 30: Relationship between yellowfin catches by the fleet of EU purse seiners and their yellowfin catches during the period 1982-2003

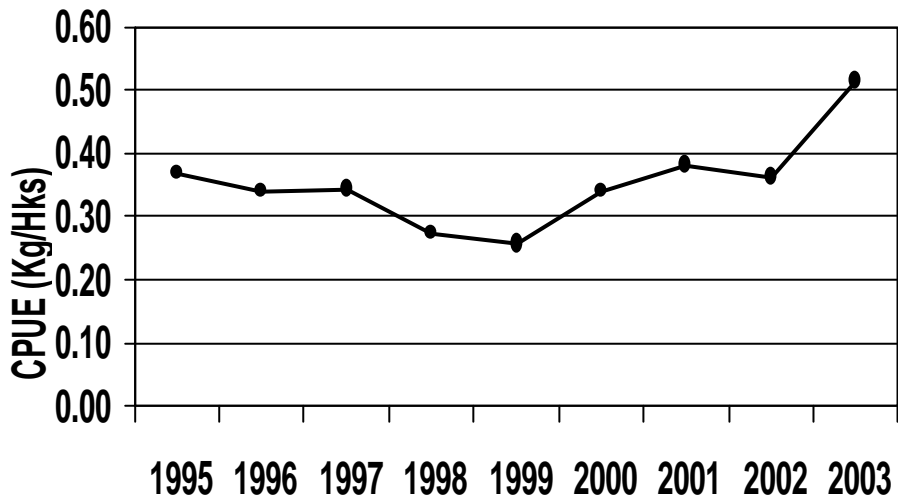


Figure 31: Yellowfin CPUE of Japanese longliners fishing around Seychelles (data collected by SFA)